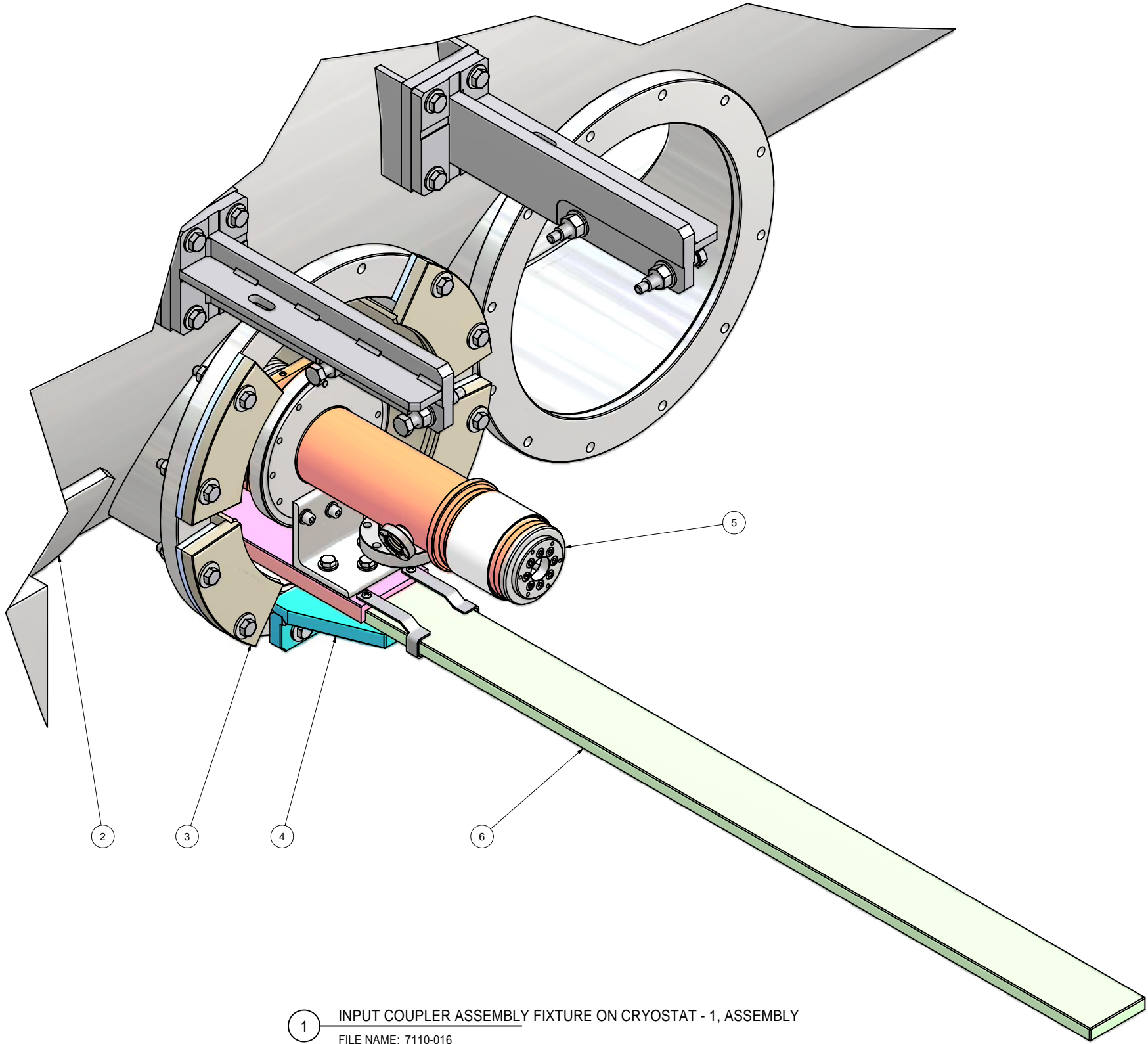
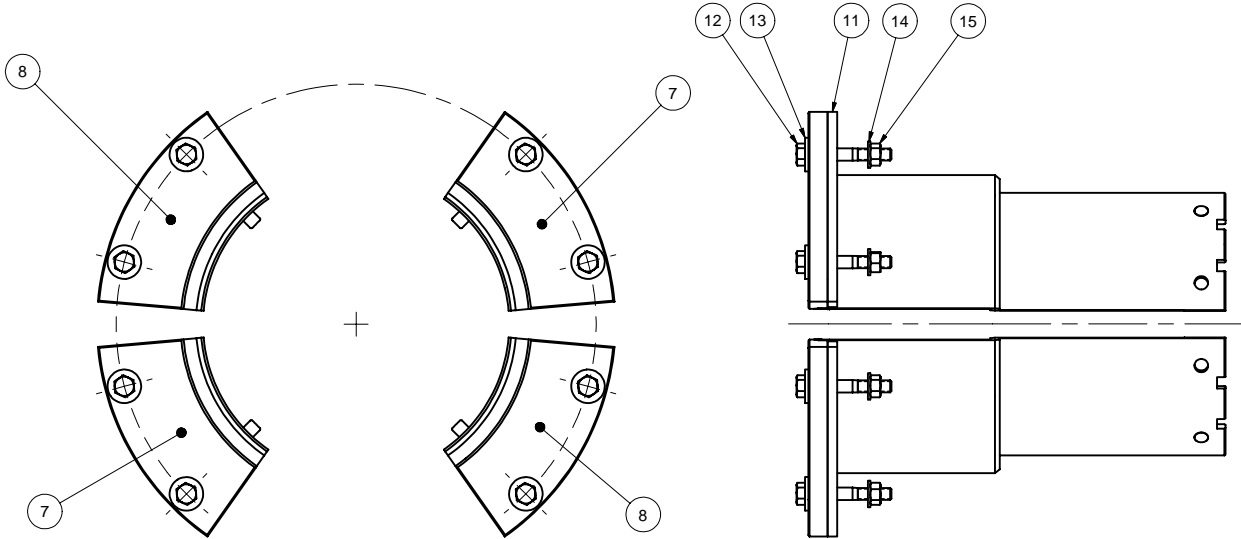


REVISIONS			
SYM.	ZONE	DESCRIPTION	DATE APP.



1 INPUT COUPLER ASSEMBLY FIXTURE ON CRYOSTAT - 1, ASSEMBLY
FILE NAME: 7110-016
SHEET NO.: 1
DFT. SCALE: 1:2
MATERIAL: AS NOTED
QTY: AS REQ'D
NOTES:



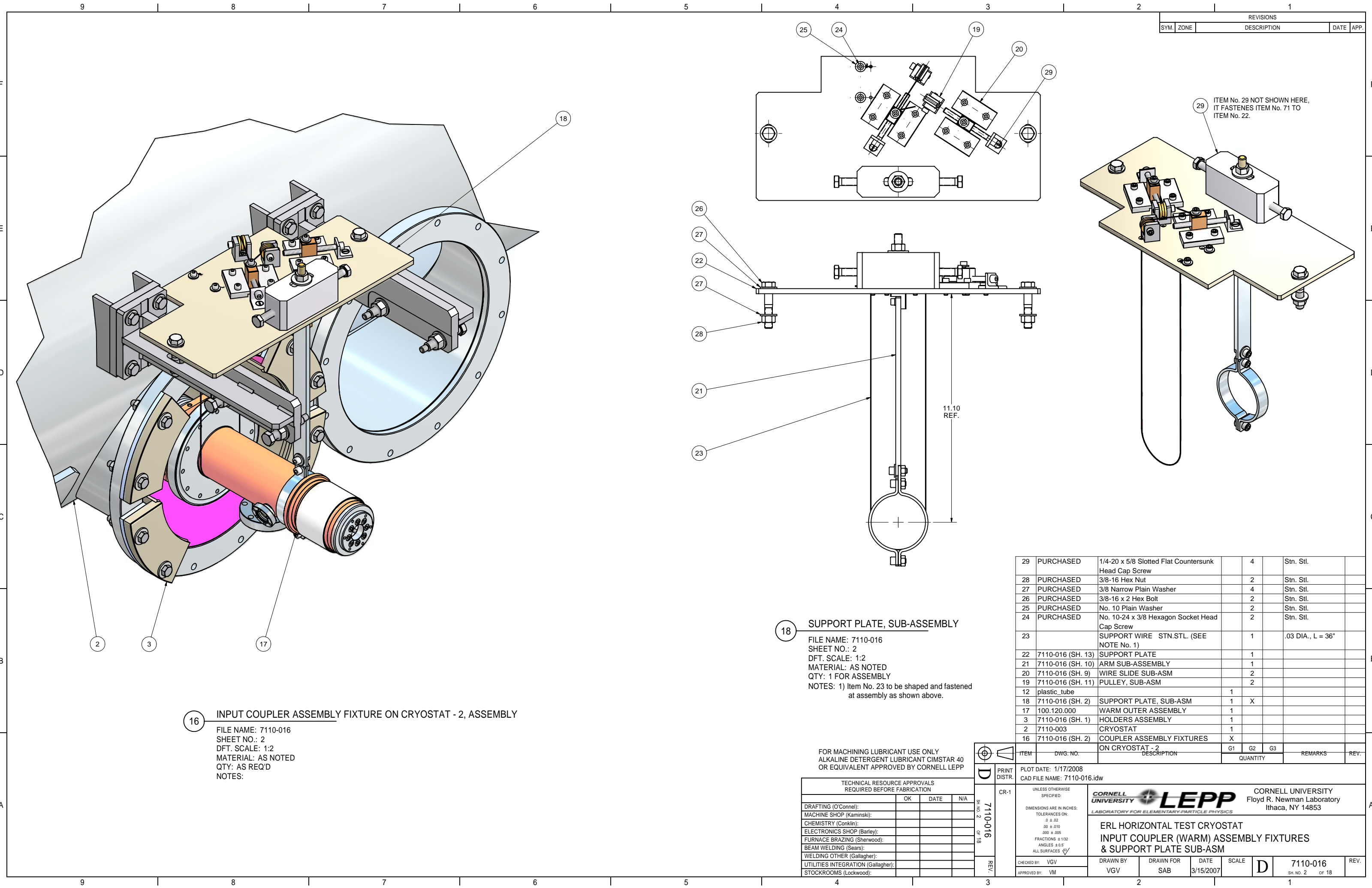
3 HOLDERS ASSEMBLY
FILE NAME: 7110-016
SHEET NO.: 1
DFT. SCALE: 1:2.5
MATERIAL: AS NOTED
QTY: 1 FOR ASSEMBLY
NOTES:

FOR MACHINING LUBRICANT USE ONLY
ALKALINE DETERGENT LUBRICANT CIMSTAR 40
OR EQUIVALENT APPROVED BY CORNELL LEPP

TECHNICAL RESOURCE APPROVALS REQUIRED BEFORE FABRICATION			
	OK	DATE	N/A
DRAFTING (O'Connell):			
MACHINE SHOP (Kaminski):			
CHEMISTRY (Conklin):			
ELECTRONICS SHOP (Barley):			
FURNACE BRAZING (Sherwood):			
BEAM WELDING (Sears):			
WELDING OTHER (Gallagher):			
UTILITIES INTEGRATION (Gallagher):			
STOCKROOMS (Lockwood):			

15	PURCHASED	5/16-18 Hex Nut		8	Stn. Stl.	
14	PURCHASED	5/16 Narrow Plain Washer		8	Stn. Stl.	
13	PURCHASED	5/16 Wide Plain Washer		8	Stn. Stl.	
12	PURCHASED	5/16-18 x 2.25 Hex Bolt		8	Stn. Stl.	
11	7110-016 (SH. 13)	SHIM		4		
8	7110-016 (SH. 3)	HOLDER 2, SUB-ASM		2		
7	7110-016 (SH. 3)	HOLDER 1, SUB-ASM		2		
6	7110-016 (SH. 5)	SLIDE GUIDE	1			
5	7110-016 (SH. 6)	COUPLER ON SLIDE, SUB-ASM	1			
4	7110-016 (SH. 5)	ANGLE, SUB-ASM	1			
3	7110-016 (SH. 1)	HOLDERS ASSEMBLY	1	X		
2	7110-003	CRYOSTAT, SUB-ASM	1			
1	7110-016 (SH. 1)	COUPLER ASSEMBLY FIXTURES ON CRYOSTAT, ASSEMBLY	X			

ITEM	DWG. NO.	DESCRIPTION	G1	G2	G3	REMARKS	REV.
PRINT DISTR.		PLOT DATE: 1/17/2008 CAD FILE NAME: 7110-016.idw	QUANTITY				
D		CR-1	UNLESS OTHERWISE SPECIFIED: DIMENSIONS ARE IN INCHES; TOLERANCES ON: .0 ± .02 .00 ± .010 .000 ± .005 FRACTIONS ± 1/32 ANGLES ± 0.5° ALL SURFACES			CORNELL UNIVERSITY FLOYD R. NEWMAN LABORATORY ITHACA, NY 14853	
REV.		7110-016 SH. NO. 1 OF 18	ERL HORIZONTAL TEST CRYOSTAT INPUT COUPLER (WARM) ASSEMBLY FIXTURES			CORNELL UNIVERSITY FLOYD R. NEWMAN LABORATORY ITHACA, NY 14853	
CHECKED BY: VGV		DRAWN BY: VGV	DRAWN FOR: SAB	DATE: 3/15/2007	SCALE: D	7110-016 SH. NO. 1 OF 18	REV.
APPROVED BY: VM							



16 INPUT COUPLER ASSEMBLY FIXTURE ON CRYOSTAT - 2, ASSEMBLY

FILE NAME: 7110-016
SHEET NO.: 2
DFT. SCALE: 1:2
MATERIAL: AS NOTED
QTY: AS REQ'D
NOTES:

18 SUPPORT PLATE, SUB-ASSEMBLY

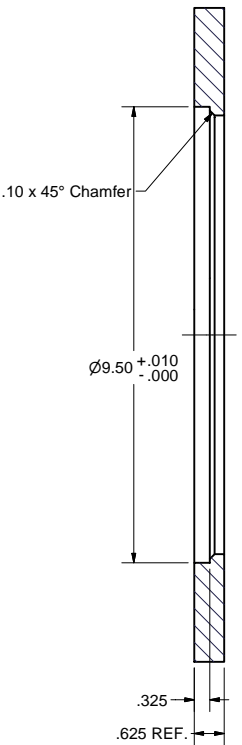
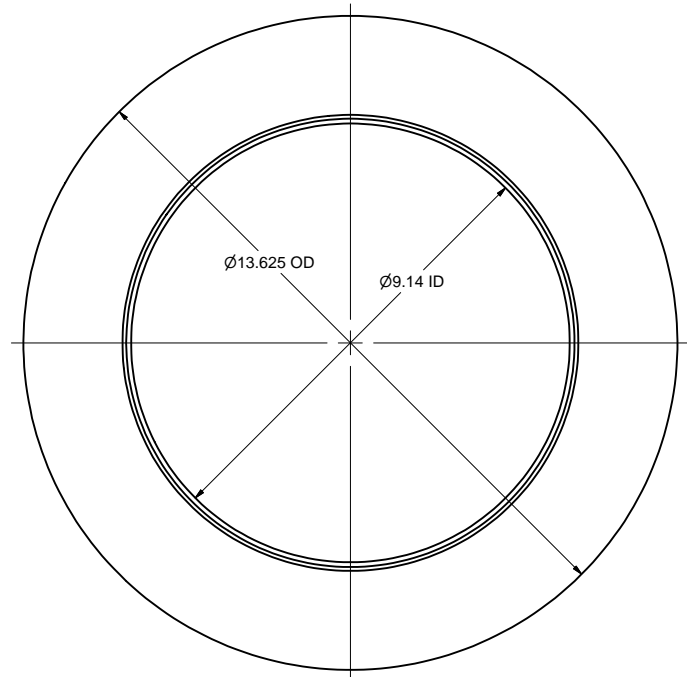
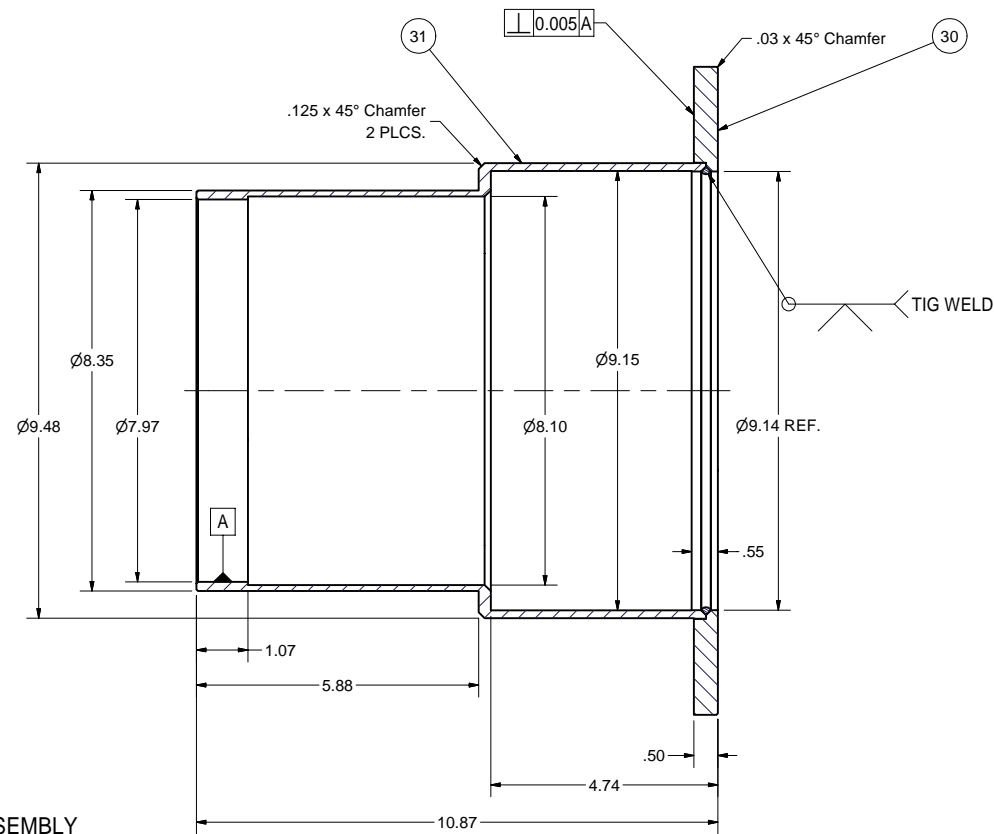
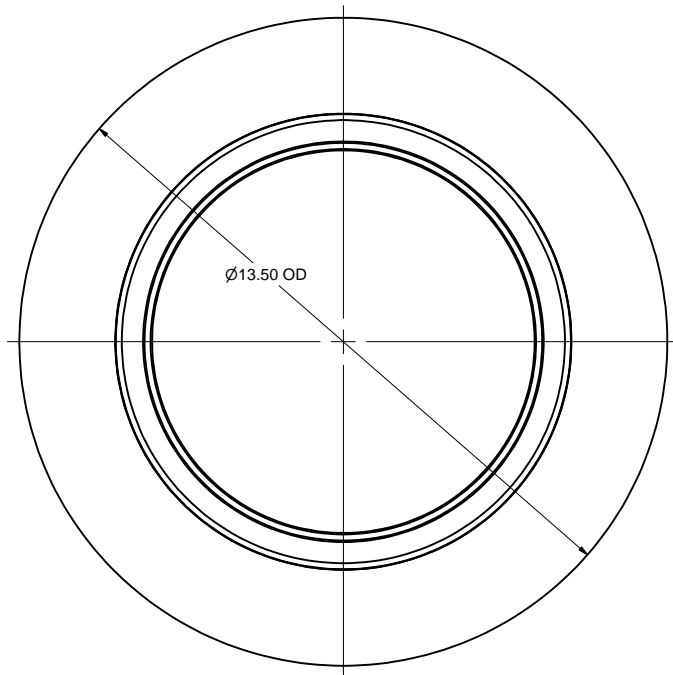
FILE NAME: 7110-016
SHEET NO.: 2
DFT. SCALE: 1:2
MATERIAL: AS NOTED
QTY: 1 FOR ASSEMBLY
NOTES: 1) Item No. 23 to be shaped and fastened at assembly as shown above.

FOR MACHINING LUBRICANT USE ONLY
ALKALINE DETERGENT LUBRICANT CIMSTAR 40
OR EQUIVALENT APPROVED BY CORNELL LEPP

TECHNICAL RESOURCE APPROVALS REQUIRED BEFORE FABRICATION			
	OK	DATE	N/A
DRAFTING (O'Connell):			
MACHINE SHOP (Kaminski):			
CHEMISTRY (Conklin):			
ELECTRONICS SHOP (Barley):			
FURNACE BRAZING (Sherwood):			
BEAM WELDING (Sears):			
WELDING OTHER (Gallagher):			
UTILITIES INTEGRATION (Gallagher):			
STOCKROOMS (Lockwood):			

ITEM	DWG. NO.	DESCRIPTION	G1	G2	G3	QUANTITY	REMARKS	REV.
29	PURCHASED	1/4-20 x 5/8 Slotted Flat Countersunk Head Cap Screw		4			Stn. Stl.	
28	PURCHASED	3/8-16 Hex Nut		2			Stn. Stl.	
27	PURCHASED	3/8 Narrow Plain Washer		4			Stn. Stl.	
26	PURCHASED	3/8-16 x 2 Hex Bolt		2			Stn. Stl.	
25	PURCHASED	No. 10 Plain Washer		2			Stn. Stl.	
24	PURCHASED	No. 10-24 x 3/8 Hexagon Socket Head Cap Screw		2			Stn. Stl.	
23		SUPPORT WIRE STN.STL. (SEE NOTE No. 1)		1			.03 DIA., L = 36"	
22	7110-016 (SH. 13)	SUPPORT PLATE		1				
21	7110-016 (SH. 10)	ARM SUB-ASSEMBLY		1				
20	7110-016 (SH. 9)	WIRE SLIDE SUB-ASM		2				
19	7110-016 (SH. 11)	PULLEY, SUB-ASM		2				
12	plastic_tube		1					
18	7110-016 (SH. 2)	SUPPORT PLATE, SUB-ASM	1	X				
17	100.120.000	WARM OUTER ASSEMBLY	1					
3	7110-016 (SH. 1)	HOLDERS ASSEMBLY	1					
2	7110-003	CRYOSTAT	1					
16	7110-016 (SH. 2)	COUPLER ASSEMBLY FIXTURES ON CRYOSTAT - 2	X					
D		PRINT DISTR.	PLOT DATE: 1/17/2008 CAD FILE NAME: 7110-016.idw					
7110-016		CR-1	UNLESS OTHERWISE SPECIFIED: DIMENSIONS ARE IN INCHES: TOLERANCES ON: .0 ± .02 .00 ± .010 .000 ± .005 FRACTIONS ± 1/32 ANGLES ± 0.5° ALL SURFACES					
REV.		SH. NO. 2 OF 18	CORNELL UNIVERSITY FLOYD R. NEWMAN LABORATORY ITHACA, NY 14853					
			ERL HORIZONTAL TEST CRYOSTAT INPUT COUPLER (WARM) ASSEMBLY FIXTURES & SUPPORT PLATE SUB-ASM					
			CHECKED BY: VGV	DRAWN BY: VGV	DRAWN FOR: SAB	DATE: 3/15/2007	SCALE: D	7110-016 SH. NO. 2 OF 18
			APPROVED BY: VM					

REVISIONS				
SYM.	ZONE	DESCRIPTION	DATE	APP.

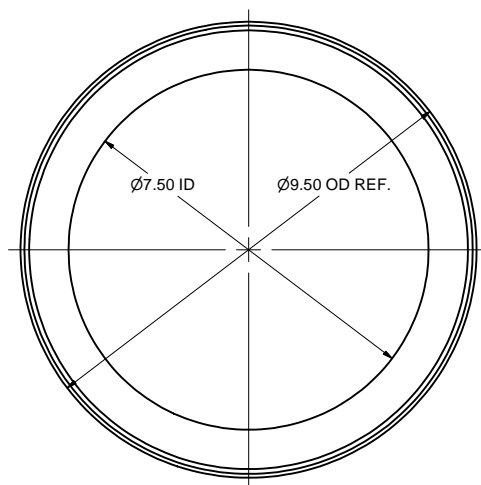
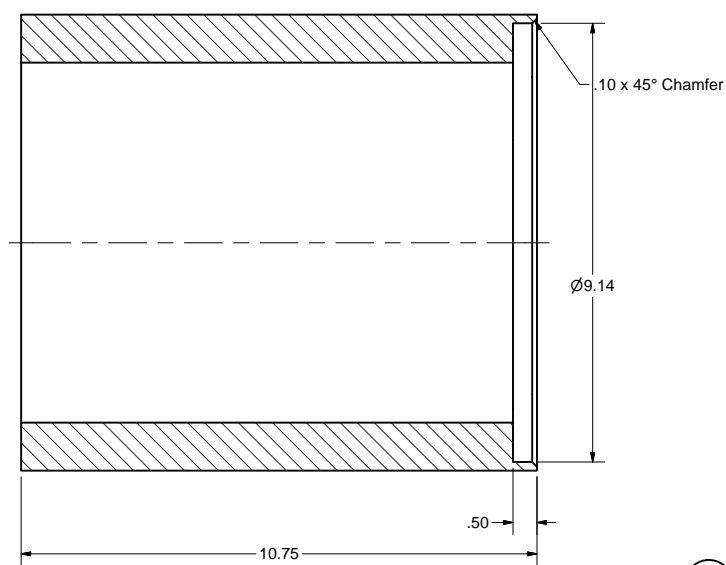


9 HOLDER, WELDING ASSEMBLY

FILE NAME: 7110-016
SHEET NO.: 4
DFT. SCALE: 1:2
MATERIAL: AS NOTED
QTY: 1 REQ'D
NOTES: 1. MACHINE AFTER WELDING
2. AFTER MACHINING, CUT IN 50° WEDGES FOR MAKING HOLDERS ITEMS 7 AND 8 (SEE SHEET 3)

30 OUTER FLANGE

FILE NAME: 7110-016
SHEET NO.: 4
DFT. SCALE: 1:2
MATERIAL: 5/8" THK 6061 ALUMINUM SHEET
QTY: 1 FOR ASSEMBLY
NOTES:

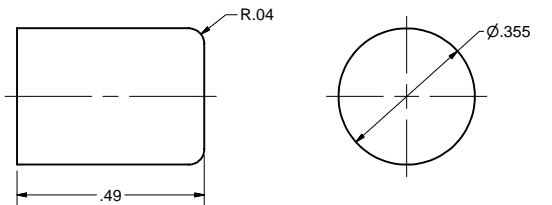


31 INNER PART





FILE NAME: 7110-016
SHEET NO.: 4
DFT. SCALE: 1:2
MATERIAL: 9.5" OD x 1.25" THK 6061 ALUMINUM TUBE
QTY: 1 FOR ASSEMBLY
NOTES:

34 PIN

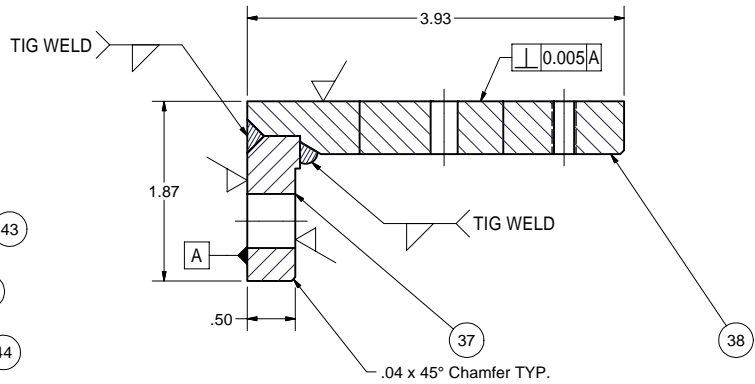
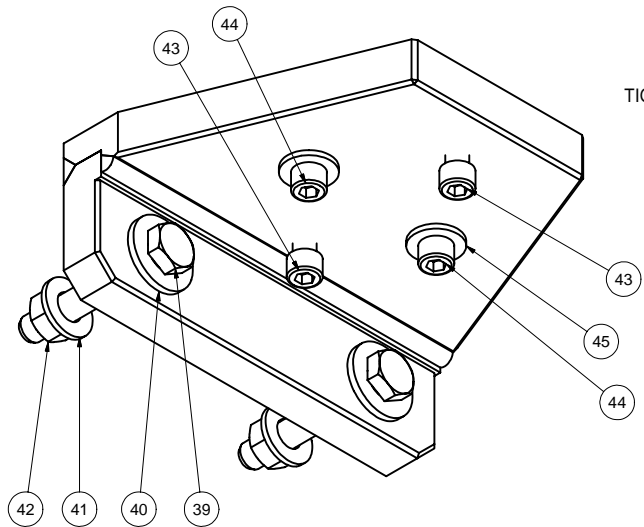
FILE NAME: 7110-016
SHEET NO.: 4
DFT. SCALE: 4:1
MATERIAL: 6061 ALUMINUM
QTY: 1 FOR ASSEMBLY (4 TOTAL)
NOTES:



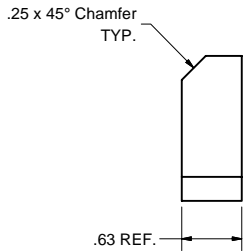
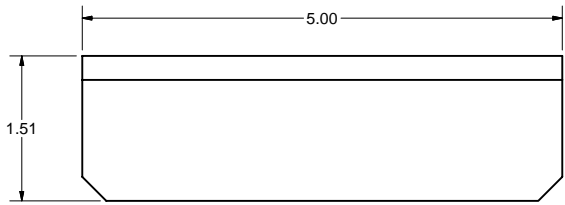
31	7110-016 (SH. 4)	INNER PART	1				
30	7110-016 (SH. 4)	OUTER FLANGE	1				
9	7110-016 (SH. 4)	HOLDER, WELDING ASSEMBLY	X				

 		ITEM	DWG. NO.	DESCRIPTION			G1	G2	G3	REMARKS	REV.
						QUANTITY					
D	PRINT DISTR.	PLOT DATE: 1/17/2008 CAD FILE NAME: 7110-016.idw									
7110-016 SH. NO. 4 OF 18	CR-1	UNLESS OTHERWISE SPECIFIED: DIMENSIONS ARE IN INCHES; TOLERANCES ON: .± .02 .00 ± 0.10 .000 ± .005 FRACTIONS ± 1/32 ANGLES ± 0.5° ALL SURFACES 		 CORNELL UNIVERSITY Floyd R. Newman Laboratory Ithaca, NY 14853							
	ERL HORIZONTAL TEST CRYOSTAT INPUT COUPLER (WARM) ASSEMBLY FIXTURES PART DETAILS										
	REV.	CHECKED BY: VGV APPROVED BY: VM	DRAWN BY VGV	DRAWN FOR SAB	DATE 3/15/2007	SCALE	D	7110-016 SH. NO. 4 OF 18		REV.	

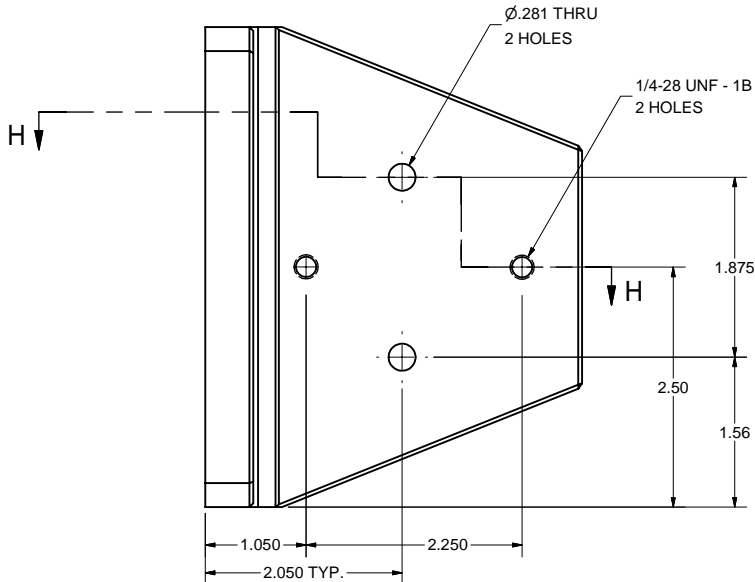
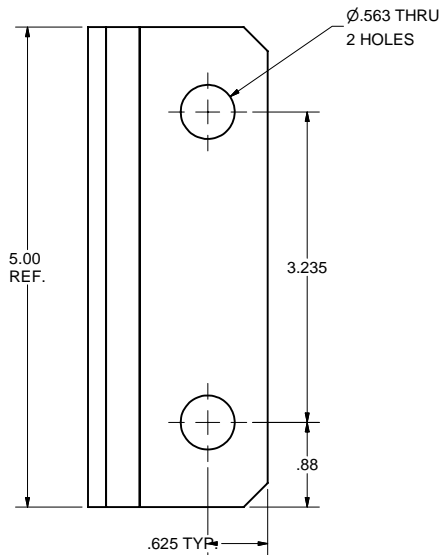
REVISIONS				
SYM.	ZONE	DESCRIPTION	DATE	APP.



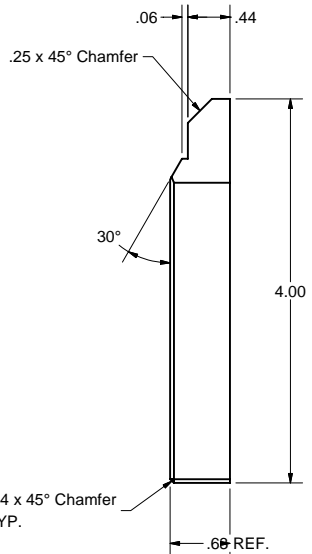
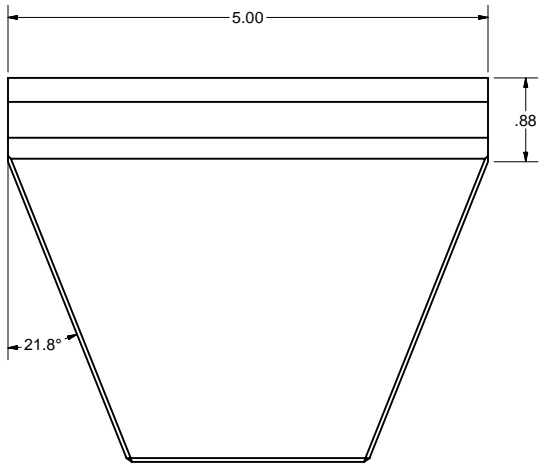
SECTION H-H



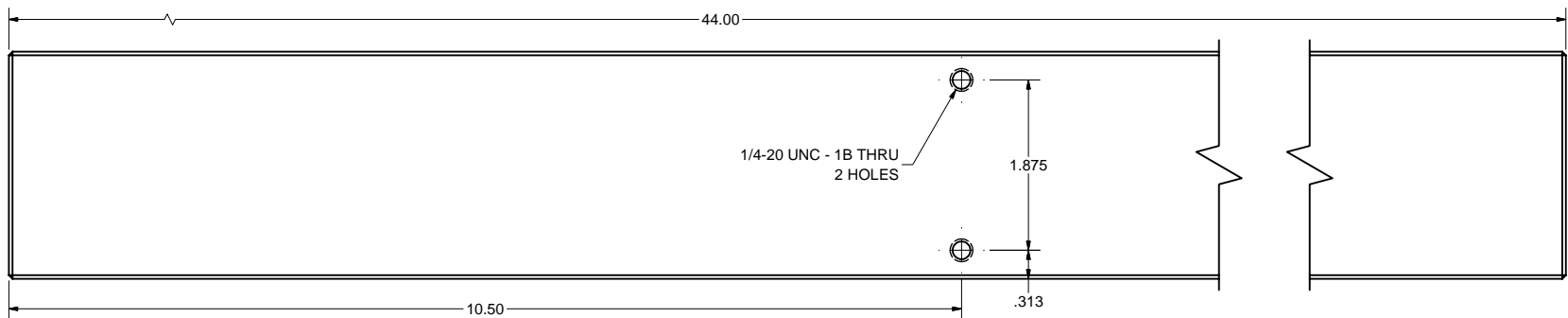
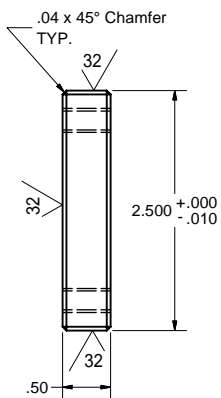
37 ANGLE BASE
FILE NAME: 7110-016
SHEET NO.: 5
DFT. SCALE: 1:1
MATERIAL: 5/8" THK. 304 STN. STL. SHEET
QTY: 1 FOR ASSEMBLY
NOTES:



4 ANGLE, SUB-ASSEMBLY
FILE NAME: 7110-016
SHEET NO.: 5
DFT. SCALE: 1:1
MATERIAL: AS NOTED
QTY: 1 FOR ASSEMBLY
NOTES: MACHINE AFTER WELDING

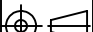




38 ANGLE PLATE
FILE NAME: 7110-016
SHEET NO.: 5
DFT. SCALE: 1:1
MATERIAL: 5/8" THK. STN. STL. SHEET
QTY: 1 FOR ASSEMBLY
NOTES:

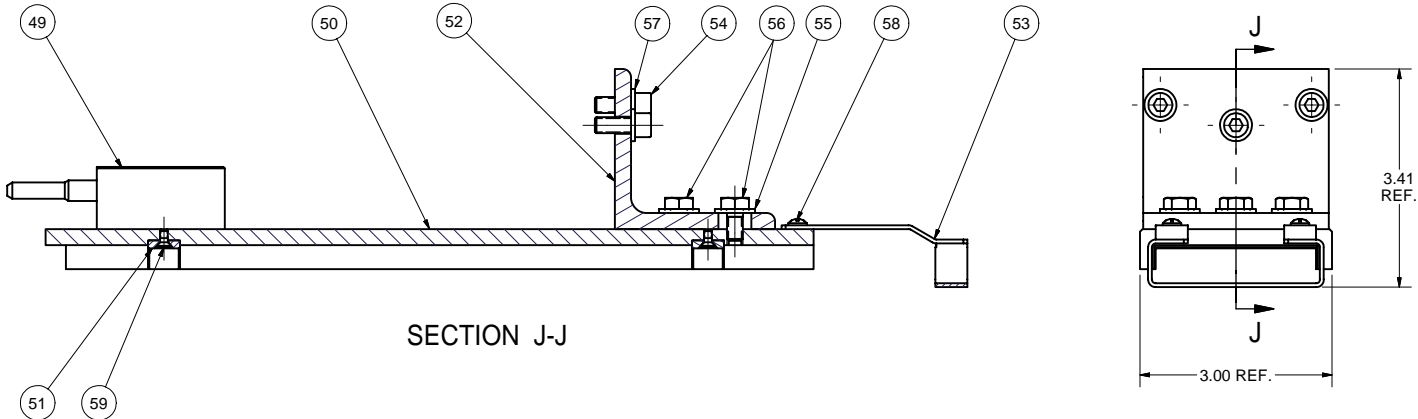
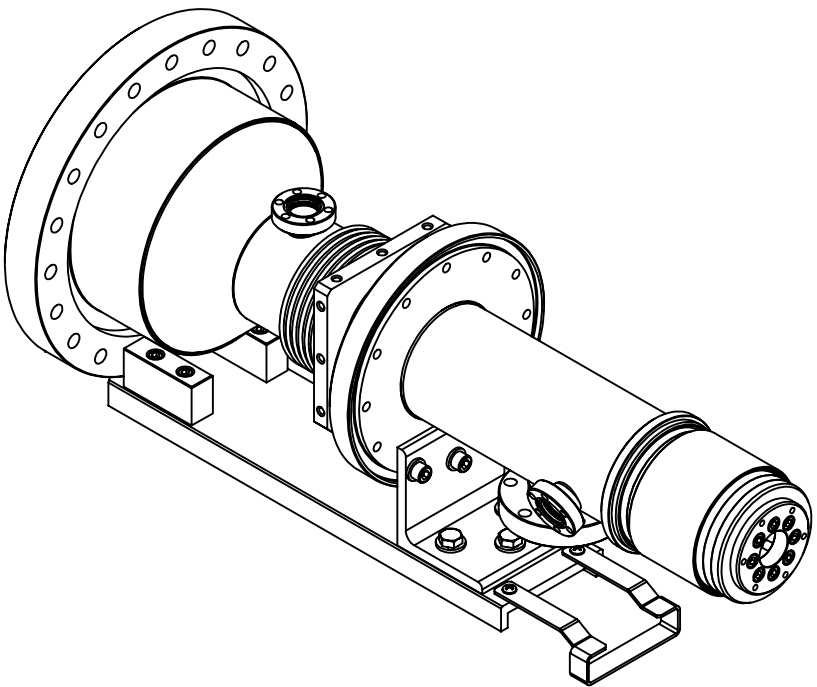
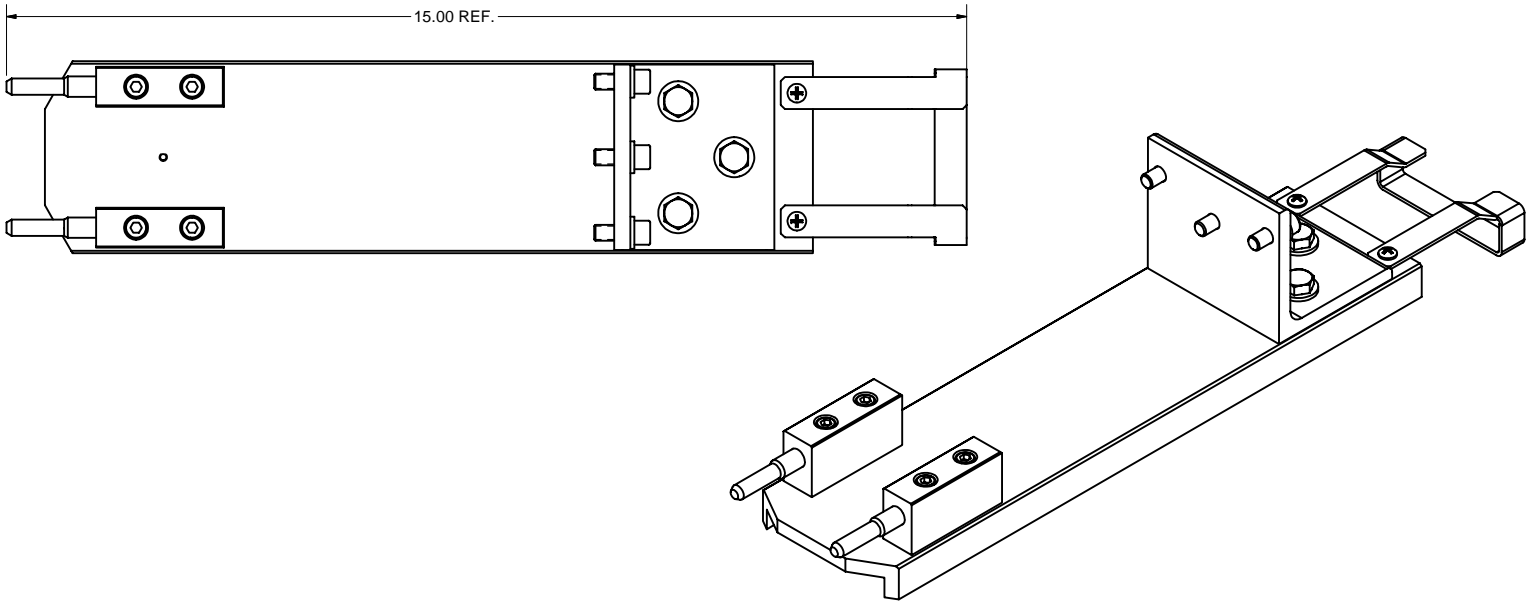
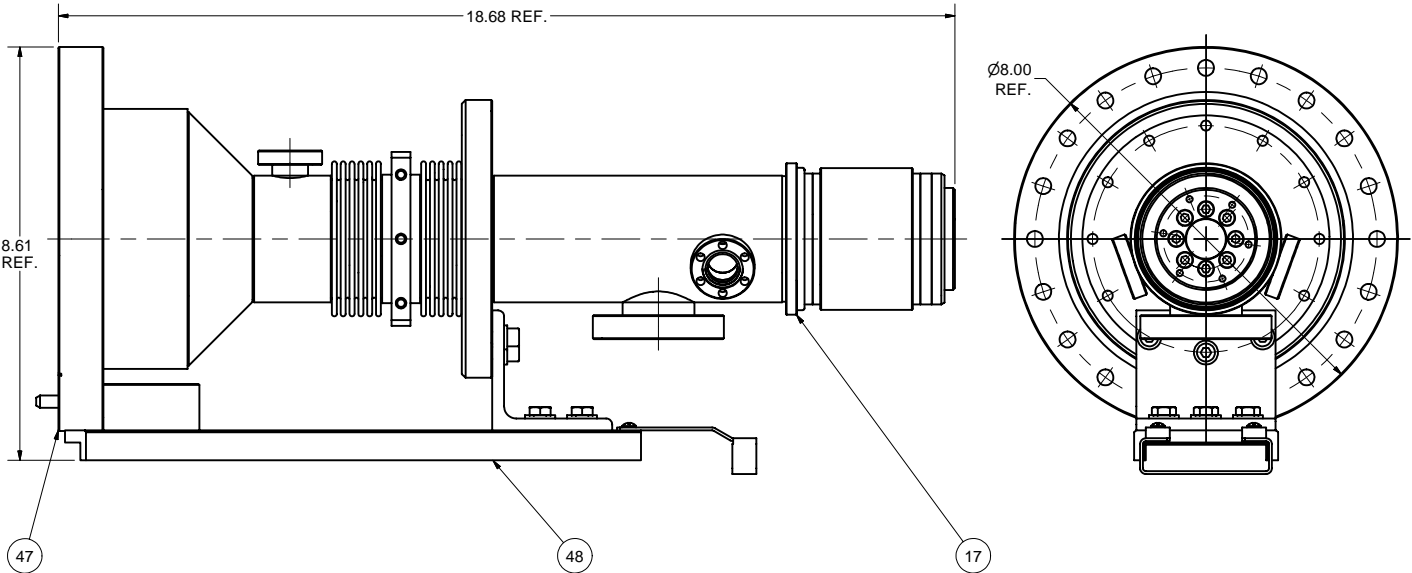


6 SLIDE GUIDE
FILE NAME: 7110-016
SHEET NO.: 5
DFT. SCALE: 1:1
MATERIAL: 304 STN. STL
QTY: 1 FOR ASSEMBLY
NOTES:

45	PURCHASED	1/4 Narrow Plain Washer	2			Stn. Stl.	
44	PURCHASED	1/4-20 x 1 Hexagon Socket Head Cap Screw	2			Stn. Stl.	
43	PURCHASED	1/4-28 x 0.75 Hexagon Socket Head Cap Screw	2			Stn. Stl.	
42	PURCHASED	5/16-18 Hex Nut	2			Stn. Stl.	
41	PURCHASED	5/16 Narrow Plain Washer	2			Stn. Stl.	
40	PURCHASED	5/16 Wide Plain Washer	2			Stn. Stl.	
39	PURCHASED	5/16-18 x 2 Hex Cap Screw	2			Stn. Stl.	
38	7110-016 (SH. 5)	ANGLE PLATE	1				
37	7110-016 (SH. 5)	ANGLE BASE	1				
4	7110-016 (SH. 5)	ANGLE, SUB-ASSEMBLY	X				

		ITEM	DWG. NO.	DESCRIPTION			G1	G2	G3	REMARKS		REV.
		QUANTITY										
D	PRINT DISTR.	PLOT DATE: 1/17/2008 CAD FILE NAME: 7110-016.idw										
	CR-1	<div>UNLESS OTHERWISE SPECIFIED: DIMENSIONS ARE IN INCHES; TOLERANCES ON: .0 ± .02 .00 ± .010 .000 ± .005 FRACTIONS ± 1/32 ANGLES ± 0.5° ALL SURFACES ✓</div>			<div><div>CORNELL UNIVERSITY</div><div>LEPP</div><div>CORNELL UNIVERSITY Floyd R. Newman Laboratory Ithaca, NY 14853</div></div> <div>ERL HORIZONTAL TEST CRYOSTAT INPUT COUPLER (WARM) ASSEMBLY FIXTURES ANGLE SUB-ASM & DETAILS</div>							
7110-016 SH. NO. 5 OF 18	REV.	CHECKED BY: VGV	DRAWN BY VGV		DRAWN FOR SAB		DATE 3/15/2007		SCALE D	7110-016 SH. NO. 5 OF 18		REV.
		APPROVED BY: VM										

REVISIONS				
SYM.	ZONE	DESCRIPTION	DATE	APP.

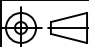



SECTION J-J

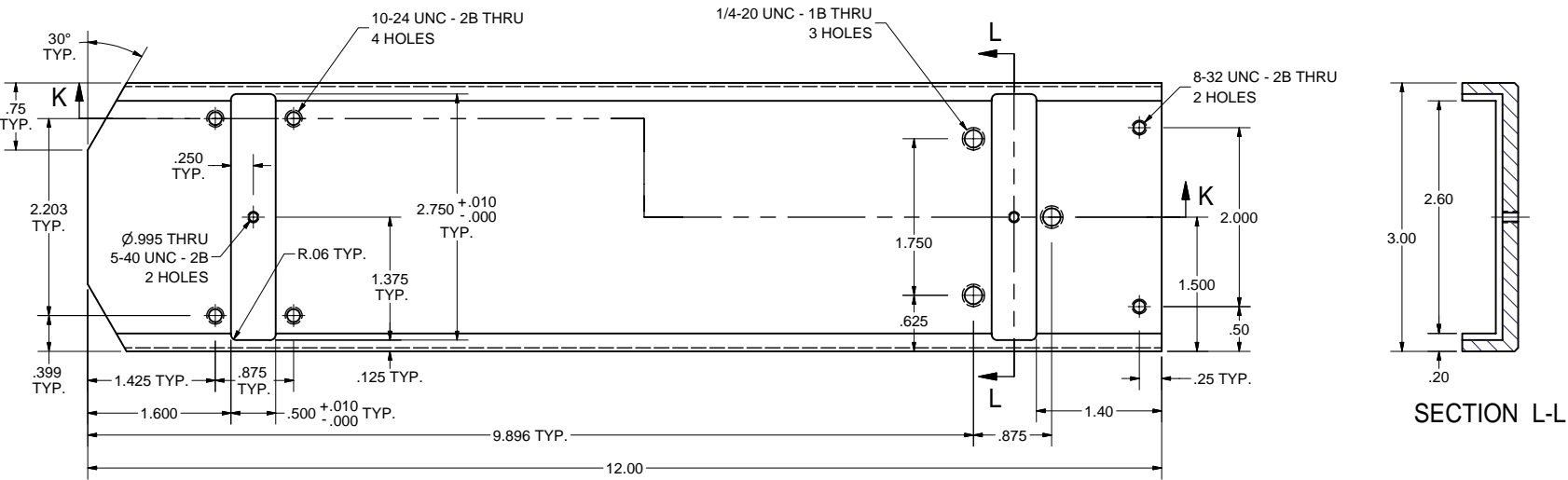
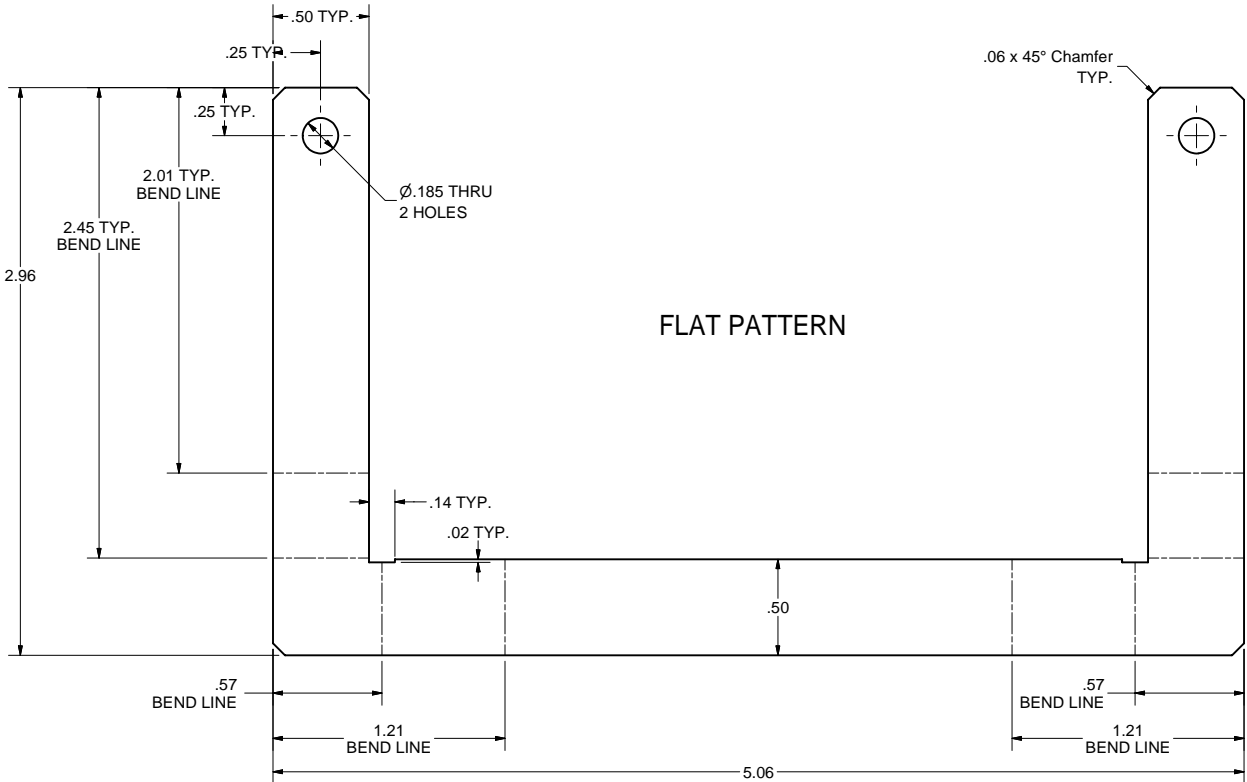
5 COUPLER ON SLIDE, SUB-ASSEMBLY
FILE NAME: 7110-016
SHEET NO.: 6
DFT. SCALE: 1:2
MATERIAL: AS NOTED
QTY: 1 FOR ASSEMBLY
NOTES:

48 COUPLER SLIDE, SUB-ASSEMBLY
FILE NAME: 7110-016
SHEET NO.: 6
DFT. SCALE: 1:1.5
MATERIAL: AS NOTED
QTY: 1 FOR ASSEMBLY
NOTES:

59	PURCHASED	5-40 x 1/4 Slotted Flat Countersunk Head Machine Screw	2	Stn. Stl.	
58	PURCHASED	No. 8-32 x 1/4 Fillister Head Machine Screw	2	Stn. Stl.	
57	PURCHASED	1/4 Plain Washer B	3	Stn. Stl.	
56	PURCHASED	1/4-20 x 0.5 Hex Bolt	3	Stn. Stl.	
55	PURCHASED	1/4 Plain Washer A	3	Stn. Stl.	
54	PURCHASED	1/4-28 x 5/8 Hexagon Socket Head Cap Screw	3	Stn. Stl.	
53	7110-016 (SH. 7)	CLAMP	1		
52	7110-016 (SH. 8)	SUPPORT ANGLE	1		
51	7110-016 (SH. 7)	TEFLON INSERT	2		
50	7110-016 (SH. 7)	COUPLER SLIDE	1		
49	7110-016 (SH. 8)	PIN BLOCK, SUB-ASM	2		
48	7110-016 (SH. 6)	COUPLER SLIDE, SUB-ASM	1	X	
47	PURCHASED	8" CF ROTATABLE FLANGE	1		316 Stn. Stl.
17	100.120.000	WARM OUTER ASSEMBLY	1		
5	7110-016 (SH. 6)	COUPLER ON SLIDE, SUB-ASM	X		

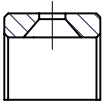
		ITEM		DWG. NO.	DESCRIPTION			G1	G2	G3	REMARKS		REV.
									QUANTITY				
D	PRINT DISTR.	PLOT DATE: 1/17/2008 CAD FILE NAME: 7110-016.idw											
7110-016 SH. NO. 6 OF 18	CR-1	UNLESS OTHERWISE SPECIFIED:		<div><div>CORNELL UNIVERSITY Floyd R. Newman Laboratory Ithaca, NY 14853</div></div>									
		DIMENSIONS ARE IN INCHES; TOLERANCES ON: .0 ± .02 .00 ± .010 .000 ± .005 FRACTIONS ± 1/32 ANGLES ± 0.5° ALL SURFACES ✓											
				ERL HORIZONTAL TEST CRYOSTAT INPUT COUPLER (WARM) ASSEMBLY FIXTURES COUPLER ON SLIDE & SLIDE SUB-ASMS									
		CHECKED BY: VGV APPROVED BY: VM		DRAWN BY VGV	DRAWN FOR SAB	DATE 3/15/2007	SCALE	D	7110-016 SH. NO. 6 OF 18	REV.			

REVISIONS				
SYM.	ZONE	DESCRIPTION	DATE	APP.
A		Release of recent VGV generated changes to this sht. JGL	10/11/07	TIO



50 COUPLER SLIDE

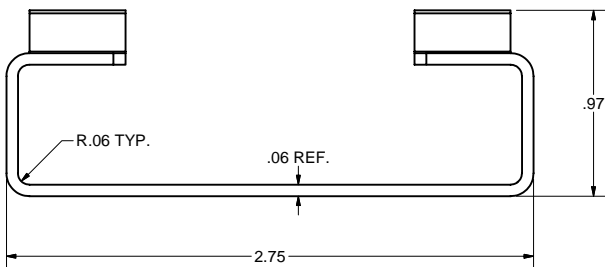
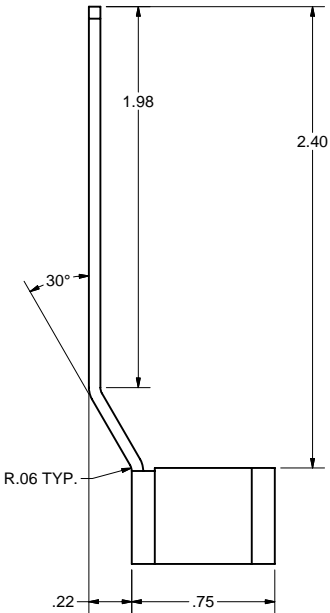
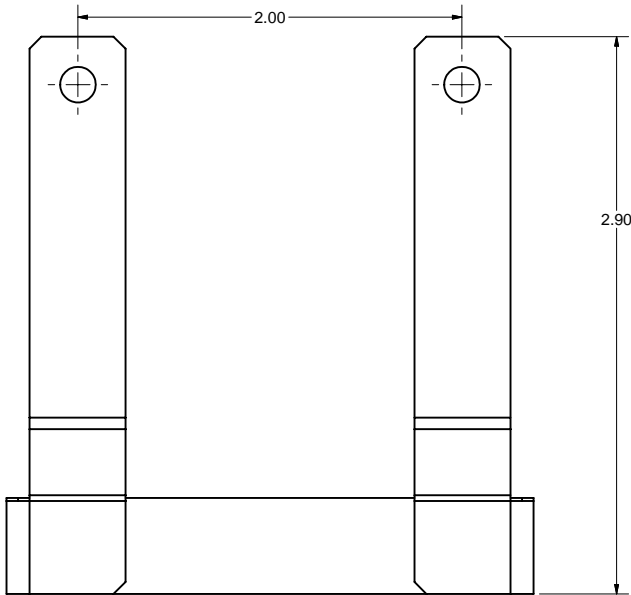
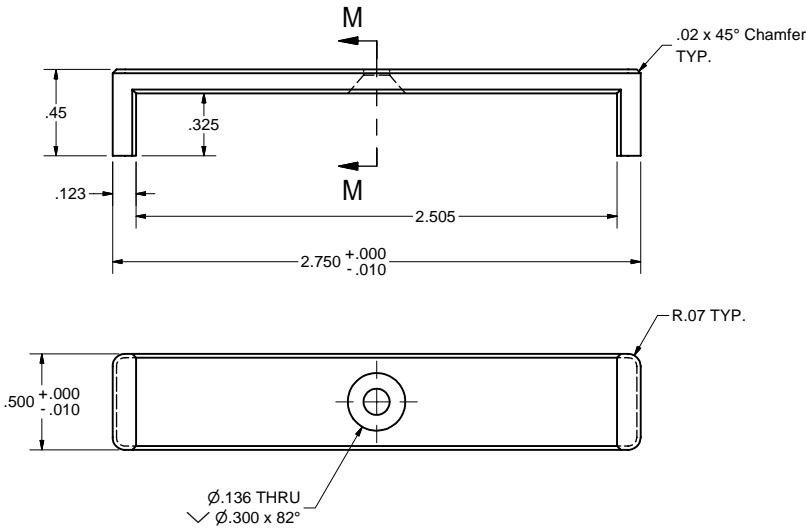
FILE NAME: 7110-016
SHEET NO.: 7
DFT. SCALE: 1:1
MATERIAL: 6061 ALUMINUM
QTY: 1 FOR ASSEMBLY
NOTES:



SECTION M-M

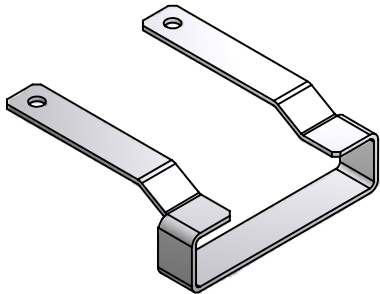
51 TEFLON INSERT

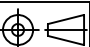


FILE NAME: 7110-016
SHEET NO.: 7
DFT. SCALE: 1:1
MATERIAL: TEFLON
QTY: 2 FOR ASSEMBLY
NOTES:



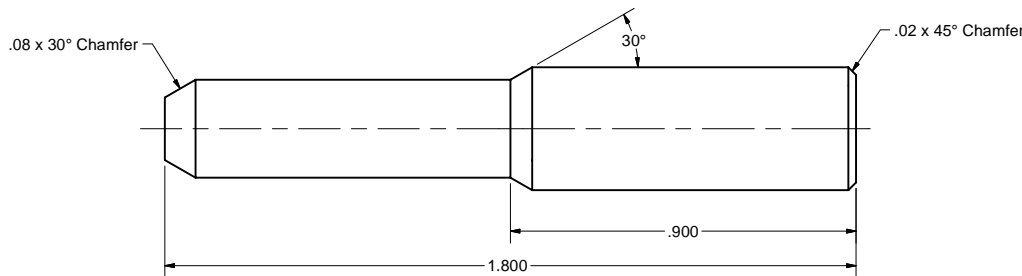
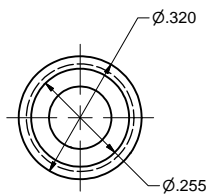
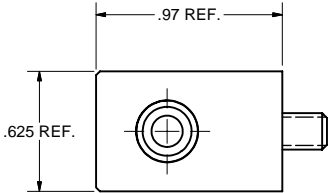
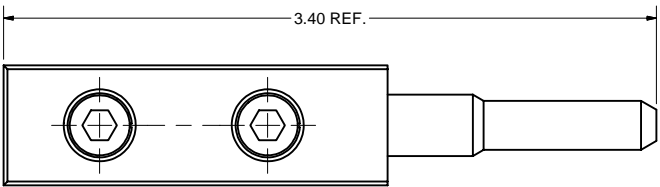
53 CLAMP

FILE NAME: 7110-016
SHEET NO.: 7
DFT. SCALE: 2:1
MATERIAL: 1/16" THK 304 STN. STL. SHEET
QTY: 1 FOR ASSEMBLY
NOTES:

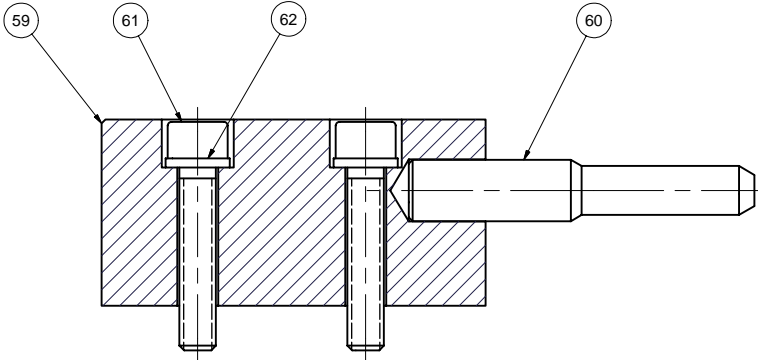


		ITEM	DWG. NO.	DESCRIPTION	G1	G2	G3	REMARKS	REV.
					QUANTITY				
D	PRINT DISTR.	PLOT DATE: 1/17/2008 CAD FILE NAME: 7110-016.idw							
	CR-1	<div>UNLESS OTHERWISE SPECIFIED: DIMENSIONS ARE IN INCHES; TOLERANCES ON: .0 ± .02 .00 ± .010 .000 ± .005 FRACTIONS ± 1/32 ANGLES ± 0.5° ALL SURFACES </div>				<div> CORNELL UNIVERSITY Floyd R. Newman Laboratory Ithaca, NY 14853</div>			
	ERL HORIZONTAL TEST CRYOSTAT INPUT COUPLER (WARM) ASSEMBLY FIXTURES PART DETAILS								
A	REV.	CHECKED BY: VGV	DRAWN BY: VGV	DRAWN FOR: SAB	DATE: 3/15/2007	SCALE: D	7110-016 SH. NO. 7 OF 18		REV. A
		APPROVED BY: VM							

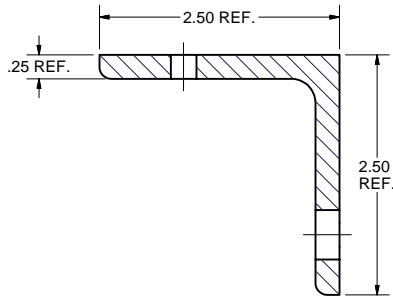
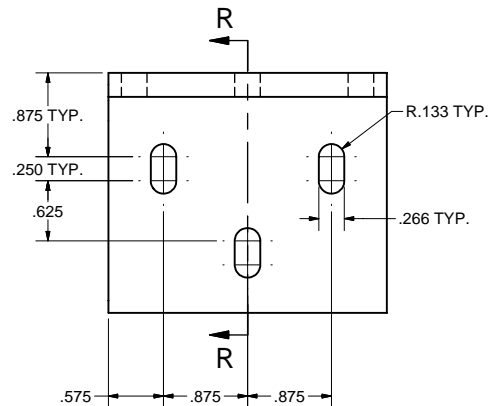
REVISIONS				
SYM.	ZONE	DESCRIPTION	DATE	APP.



60 PIN 2
FILE NAME: 7110-016
SHEET NO.: 8
DFT. SCALE: 4:1
MATERIAL: BRONZE
QTY: 1 FOR ASSEMBLY
NOTES:

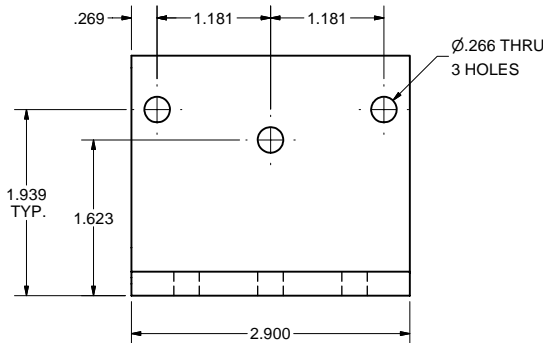
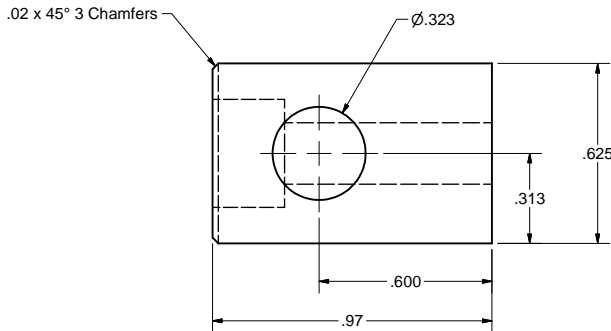
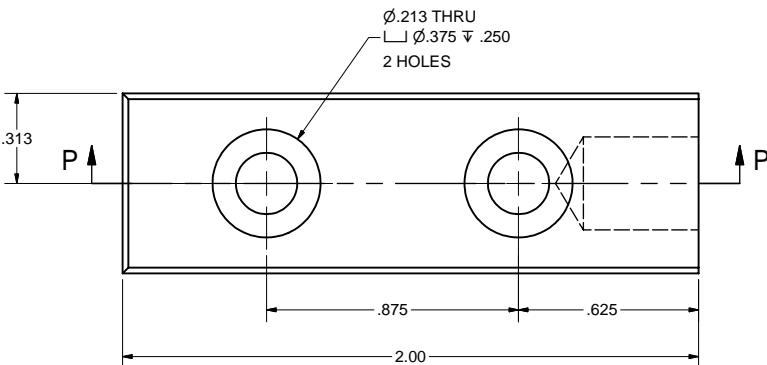


49 PIN BLOCK, SUB-ASSEMBLY
FILE NAME: 7110-016
SHEET NO.: 8
DFT. SCALE: 2:1
MATERIAL: AS NOTED
QTY: 2 FOR ASSEMBLY
NOTES:



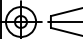
SECTION R-R

52 SUPPORT ANGLE
FILE NAME: 7110-016
SHEET NO.: 8
DFT. SCALE: 1:1
MATERIAL: 2.5" x 2.5" x .25" 6061 ALUMINUM ANGLE
QTY: 1 FOR ASSEMBLY
NOTES:



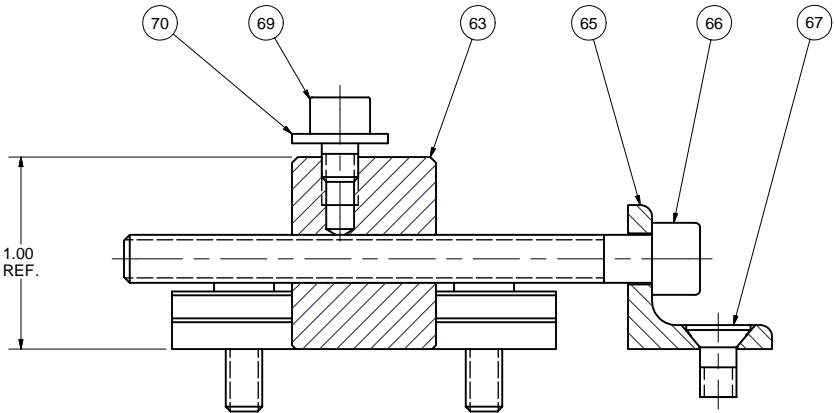
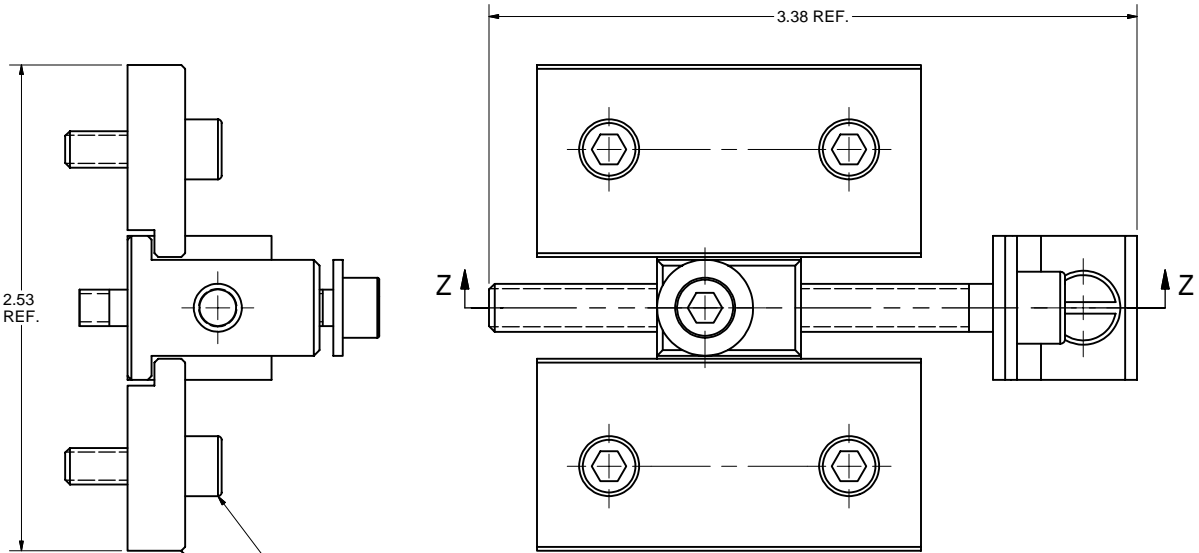
59 PIN BLOCK
FILE NAME: 7110-016
SHEET NO.: 8
DFT. SCALE: 3:1
MATERIAL: 6061 ALUMINUM
QTY: 1 FOR ASSEMBLY
NOTES:

62	PURCHASED	No. 10 Helical Spring Lock Washer	2			Stn. Stl.	
61	PURCHASED	No. 10-24 x 1 Hexagon Socket Head Cap Screw	2			Stn. Stl.	
60	7110-016 (SH. 8)	PIN 2	1				
59	7110-016 (SH. 8)	PIN BLOCK	1				
49	7110-016 (SH. 8)	PIN BLOCK, SUB-ASSEMBLY	X				

		ITEM	DWG. NO.	DESCRIPTION			G1	G2	G3	REMARKS		REV.	
		QUANTITY											
D		PRINT DISTR.	PLOT DATE: 1/17/2008 CAD FILE NAME: 7110-016.idw										
7110-016 SH. NO. 8 OF 18		CR-1	UNLESS OTHERWISE SPECIFIED: DIMENSIONS ARE IN INCHES; TOLERANCES ON: .0 ± .02 .00 ± .010 .000 ± .005 FRACTIONS ± 1/32 ANGLES ± 0.5° ALL SURFACES ✓		<div>CORNELL UNIVERSITY FLOYD R. NEWMAN LABORATORY ITHACA, NY 14853</div> <div>ERL HORIZONTAL TEST CRYOSTAT INPUT COUPLER (WARM) ASSEMBLY FIXTURES PIN BLOCK SUB-ASM & DETAILS</div>								
REV.		CHECKED BY: VGV	DRAWN BY VGV		DRAWN FOR SAB		DATE 3/15/2007		SCALE D		7110-016 SH. NO. 8 OF 18		REV.
		APPROVED BY: VM											

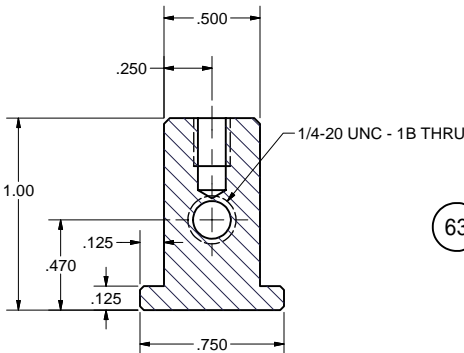
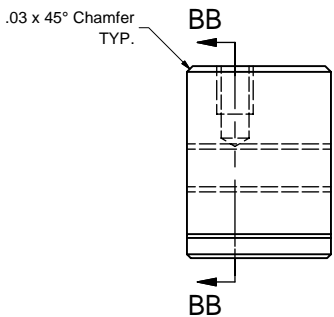
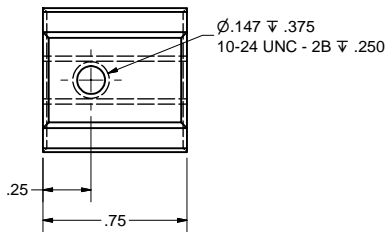
ERL HORIZONTAL TEST CRYOSTAT
INPUT COUPLER (WARM) ASSEMBLY FIXTURES
PIN BLOCK SUB-ASM & DETAILS

REVISIONS			
SYM.	ZONE	DESCRIPTION	DATE APP.



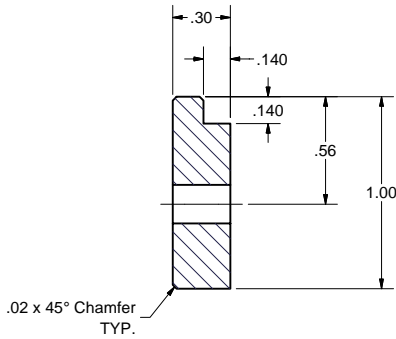
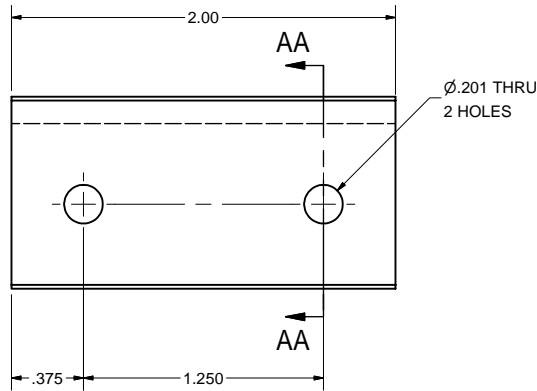
SECTION Z-Z

20 WIRE SLIDE, SUB-ASSEMBLY
FILE NAME: 7110-016
SHEET NO.: 9
DFT. SCALE: 2:1
MATERIAL: AS NOTED
QTY: 2 FOR ASSEMBLY
NOTES:



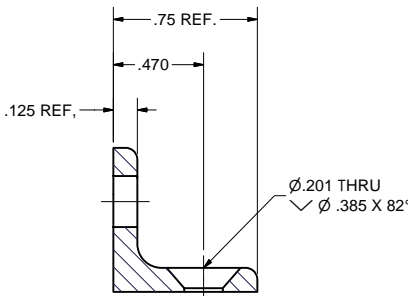
SECTION BB-BB

63 WIRE SLIDE
FILE NAME: 7110-016
SHEET NO.: 9
DFT. SCALE: 2:1
MATERIAL: BRASS
QTY: 1 FOR ASSEMBLY
NOTES:

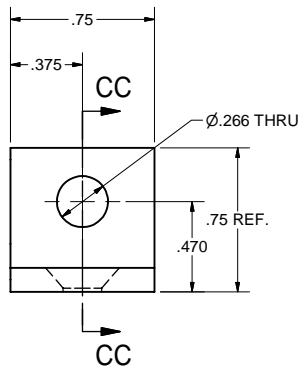


SECTION AA-AA

64 WIRE SLIDE GUIDE
FILE NAME: 7110-016
SHEET NO.: 9
DFT. SCALE: 2:1
MATERIAL: 6061 ALUMINUM
QTY: 2 FOR ASSEMBLY
NOTES:




SECTION CC-CC

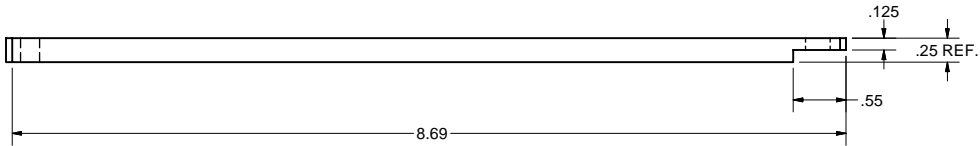


65 WIRE ANGLE
FILE NAME: 7110-016
SHEET NO.: 9
DFT. SCALE: 2:1
MATERIAL: 3/4" x 3/4" x 1/8" 6061 ALUMINUM ANGLE
QTY: 1 FOR ASSEMBLY
NOTES:

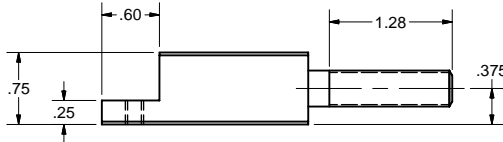
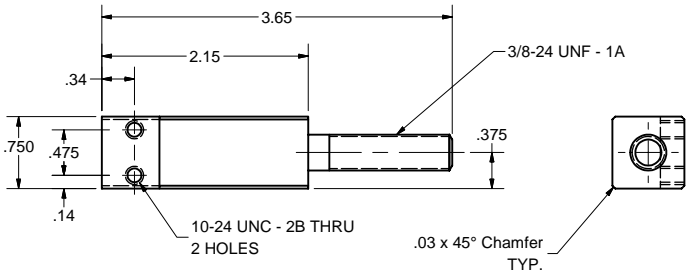
70	PURCHASED	No. 10 Plain Washer	1			Stn Stl.	
69	PURCHASED	No. 10-24 x 1/4 Hexagon Socket Head Cap Screw	1			Stn Stl.	
68	PURCHASED	No. 10-24 x 5/8 Hexagon Socket Head Cap Screw	4			Stn Stl.	
67	PURCHASED	No. 10-24 x 3/8 Slotted Flat Countersunk Head Machine Screw	1			Stn Stl.	
66	PURCHASED	1/4-20 x 2.75 Hexagon Socket Head Cap Screw	1			Stn Stl.	
65	7110-016 (SH.9)	WIRE ANGLE	1				
64	7110-016 (SH.9)	WIRE SLIDE GUIDE	2				
63	7110-016 (SH.9)	WIRE SLIDE	1				
20	7110-016 (SH.9)	WIRE SLIDE, SUB-ASM	X				

		ITEM	DWG. NO.	DESCRIPTION			G1	G2	G3	REMARKS	REV.
					QUANTITY						
D	PRINT DISTR.	PLOT DATE: 1/17/2008 CAD FILE NAME: 7110-016.idw									
	7110-016 SH. NO. 9 OF 18	CR-1	UNLESS OTHERWISE SPECIFIED: DIMENSIONS ARE IN INCHES; TOLERANCES ON: .0 ± .02 .00 ± 0.10 .000 ± .005 FRACTIONS ± 1/32 ANGLES ± 0.5° ALL SURFACES ✓		<div>CORNELL UNIVERSITY  CORNELL UNIVERSITY Floyd R. Newman Laboratory Ithaca, NY 14853</div> <div>ERL HORIZONTAL TEST CRYOSTAT INPUT COUPLER (WARM) ASSEMBLY FIXTURES WIRE SLIDE SUB-ASM & DETAILS</div>						
REV.	CHECKED BY: VGV APPROVED BY: VM	DRAWN BY VGW	DRAWN FOR SAB	DATE 3/15/2007	SCALE	D	7110-016 SH. NO. 9 OF 18		REV.		

REVISIONS				
SYM.	ZONE	DESCRIPTION	DATE	APP.
A		Release of recent VGV generated changes to this sht. JGL	10/11/07	TIO
B	E5	ADDED HOLE DIM. TO PART 73. TMK	10/17/07	TOC




73 SUPPORT ARM
FILE NAME: 7110-016
SHEET NO.: 10
DFT. SCALE: 1:1
MATERIAL: 1/4" THK 6061 ALUMINUM SHEET
QTY: 1 FOR ASSEMBLY
NOTES:



72 ADJUSTMENT SCREW
FILE NAME: 7110-016
SHEET NO.: 10
DFT. SCALE: 1:1
MATERIAL: BRASS
QTY: 1 FOR ASSEMBLY
NOTES:

84	PURCHASED	1/4-20 Hex Nut	3		Stn. Stl.	
83	PURCHASED	1/4 Narrow Plain Washer	1		Stn. Stl.	
82	PURCHASED	1/4-20 x 5/8 Hexagon Socket Head Cap Screw	1		Stn. Stl.	
81	PURCHASED	1/4-20 x 1/2 Hexagon Socket Head Cap Screw	2		Stn. Stl.	
80	PURCHASED	No. 10 Helical Spring Lock Washer	2		Stn. Stl.	
79	PURCHASED	No. 10-24 x 1/2 Hexagon Socket Head Cap Screw	2		Stn. Stl.	
78	PURCHASED	3/8-24 x 2.5 Hex Cap Screw, Fully Threaded	2		Stn. Stl.	
77	PURCHASED	3/8 Wide Plain Washer	1		Stn. Stl.	
76	PURCHASED	3/8-24 Hex Nut	1		Stn. Stl.	
75	7110-016 (SH. 12)	CLAMP 2	1			
74	7110-016 (SH. 12)	CLAMP 1	1			
73	7110-016 (SH. 10)	SUPPORT ARM	1			
72	7110-016 (SH. 10)	ADJUSMENT SCREW	1			
71	7110-016 (SH. 12)	SUPPORT BLOCK	1			
21	7110-016 (SH. 10)	SRM, SUB-ASSEMBLY	X			

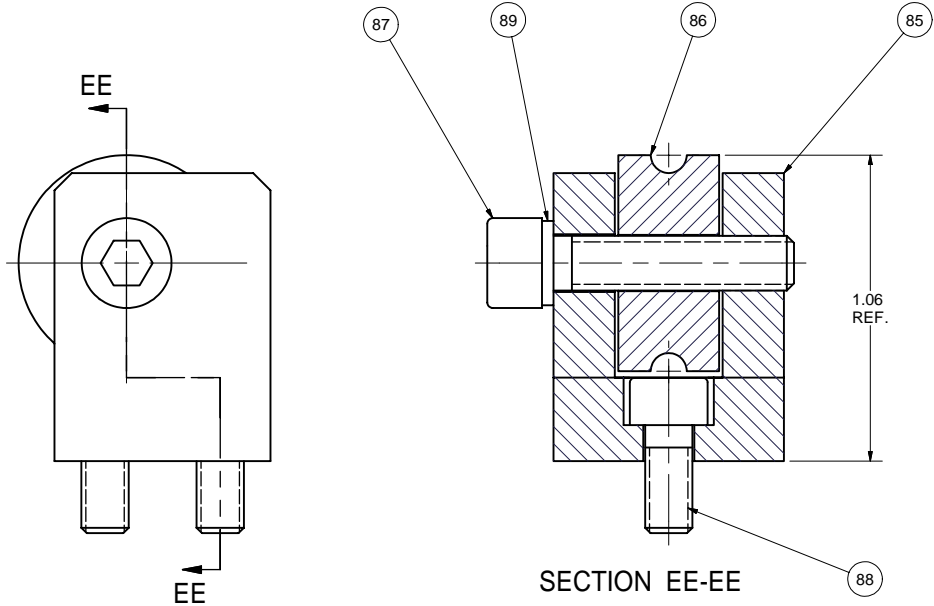
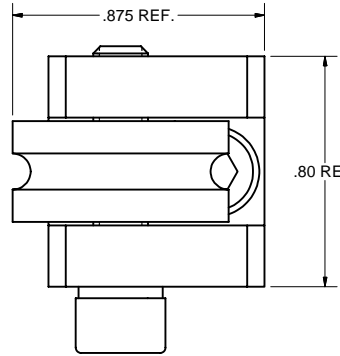
		ITEM		DWG. NO.		DESCRIPTION			G1	G2	G3	REMARKS	REV.
									QUANTITY				
D	PRINT DISTR.	PLOT DATE: 1/17/2008 CAD FILE NAME: 7110-016.idw											
	CR-1	UNLESS OTHERWISE SPECIFIED: DIMENSIONS ARE IN INCHES: TOLERANCES ON: .0 ± .02 .00 ± .010 .000 ± .005 FRACTIONS ± 1/32 ANGLES ± 0.5° ALL SURFACES ✓			<div>CORNELL UNIVERSITY FLOYD R. NEWMAN LABORATORY ITHACA, NY 14853</div> <div> LABORATORY FOR ELEMENTARY-PARTICLE PHYSICS</div> <div>ERL HORIZONTAL TEST CRYOSTAT INPUT COUPLER (WARM) ASSEMBLY FIXTURES ARM SUB-ASM & DETAILS</div>								
B	REV.	CHECKED BY: VGV	DRAWN BY: VGV		DRAWN FOR: SAB		DATE: 3/15/2007		SCALE: D		7110-016		REV. B
		APPROVED BY: VM	SH. NO. 10 OF 18										

16.11 REF.

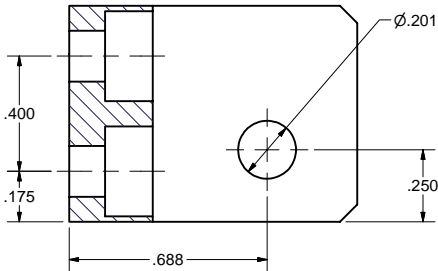
SECTION DD-DD

21 ARM, SUB-ASSEMBLY
FILE NAME: 7110-016
SHEET NO.: 10
DFT. SCALE: 1:1
MATERIAL: AS NOTED
QTY: 1 FOR ASSEMBLY
NOTES:

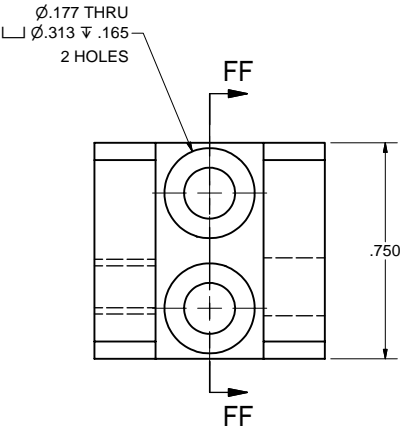
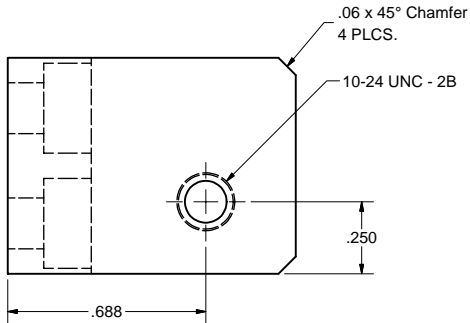
REVISIONS				
SYM.	ZONE	DESCRIPTION	DATE	APP.



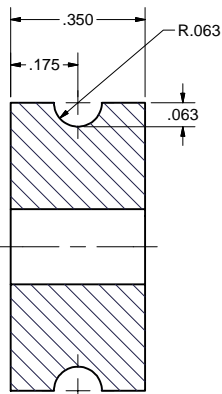
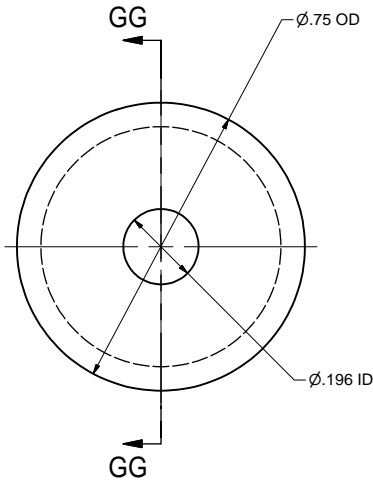
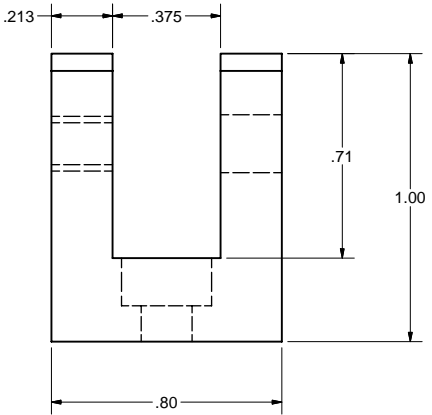
19 PULLEY, SUB-ASSEMBLY
FILE NAME: 7110-016
SHEET NO.: 11
DFT. SCALE: 3:1
MATERIAL: AS NOTED
QTY: 2 FOR ASSEMBLY
NOTES:



SECTION FF-FF



85 PULLEY SUPPORT
FILE NAME: 7110-016
SHEET NO.: 11
DFT. SCALE: 3:1
MATERIAL: 304 STN. STL.
QTY: 1 FOR ASSEMBLY
NOTES:



SECTION GG-GG

86 PULLEY
FILE NAME: 7110-016
SHEET NO.: 11
DFT. SCALE: 4:1
MATERIAL: BRASS
QTY: 1 FOR ASSEMBLY
NOTES:

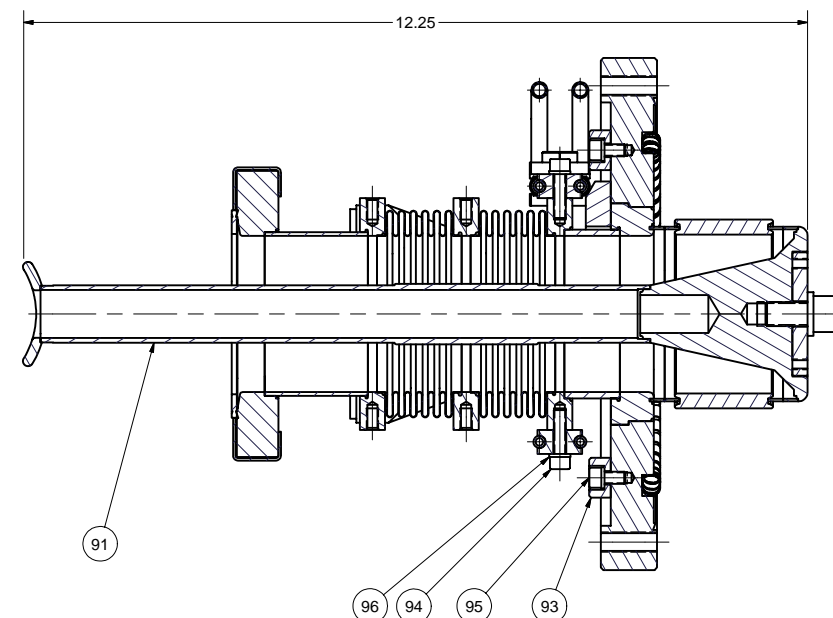
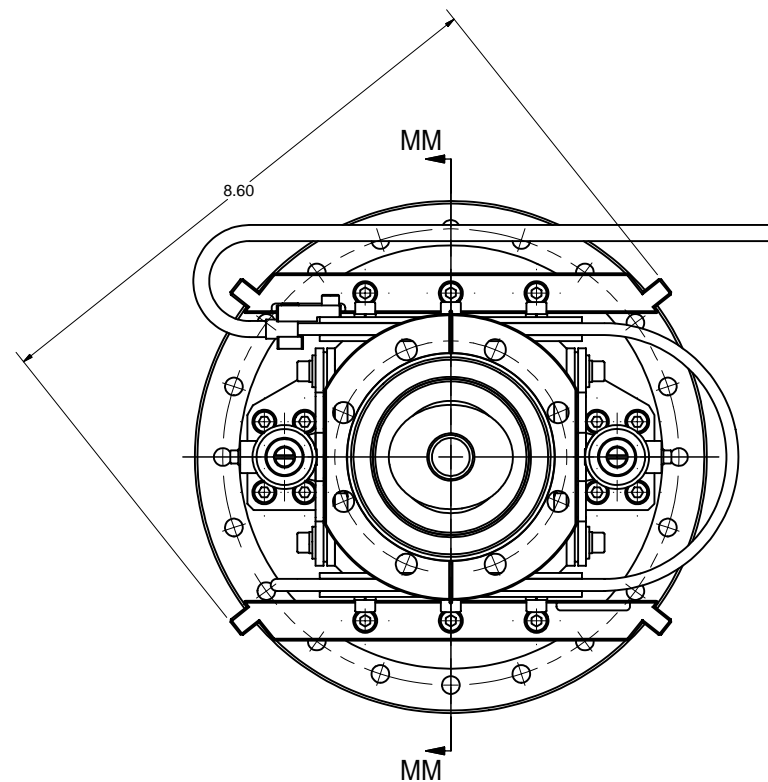
89	PURCHASED	No. 8 Helical Spring Lock Washer	1			Stn. Stl.	
88	PURCHASED	No. 8-32 x 3/8 Hexagon Socket Head Cap Screw	2			Stn. Stl.	
87	PURCHASED	No. 10-24 x 7/8 Hexagon Socket Head Cap Screw	1			Stn. Stl.	
86	7110-016 (SH. 11)	PULLEY	1				
85	7110-016 (SH. 11)	PULLEY SUPPORT	1				
19	7110-016 (SH. 11)	PULLEY, SUB-ASSEMBLY	X				

ITEM	DWG. NO.	DESCRIPTION	QUANTITY			REMARKS	REV.
			G1	G2	G3		
89	PURCHASED	No. 8 Helical Spring Lock Washer	1			Stn. Stl.	
88	PURCHASED	No. 8-32 x 3/8 Hexagon Socket Head Cap Screw	2			Stn. Stl.	
87	PURCHASED	No. 10-24 x 7/8 Hexagon Socket Head Cap Screw	1			Stn. Stl.	
86	7110-016 (SH. 11)	PULLEY	1				
85	7110-016 (SH. 11)	PULLEY SUPPORT	1				
19	7110-016 (SH. 11)	PULLEY, SUB-ASSEMBLY	X				

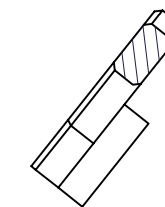
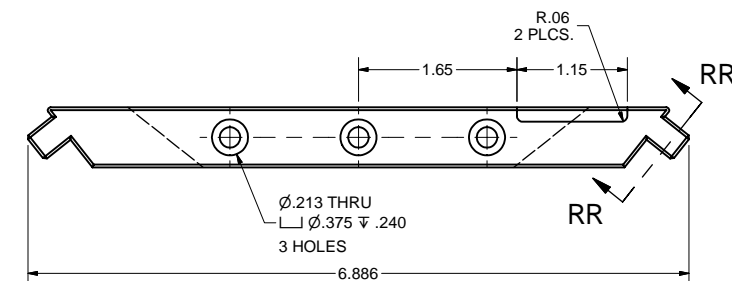
PRINT DISTR.	PLOT DATE: 1/17/2008 CAD FILE NAME: 7110-016.idw						
7110-016	CR-1	UNLESS OTHERWISE SPECIFIED: DIMENSIONS ARE IN INCHES; TOLERANCES ON: .0 ± .02 .00 ± .010 .000 ± .005 FRACTIONS ± 1/32 ANGLES ± 0.5° ALL SURFACES	CORNELL UNIVERSITY LEPP LABORATORY FOR ELEMENTARY-PARTICLE PHYSICS CORNELL UNIVERSITY Floyd R. Newman Laboratory Ithaca, NY 14853				
REV.	CHECKED BY: VGV APPROVED BY: VM	DRAWN BY: VGV	DRAWN FOR: SAB	DATE: 3/15/2007	SCALE: D	7110-016 SH. NO. 11 OF 18	REV.



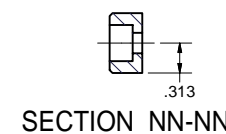
ERL HORIZONTAL TEST CRYOSTAT
INPUT COUPLER (WARM) ASSEMBLY FIXTURES



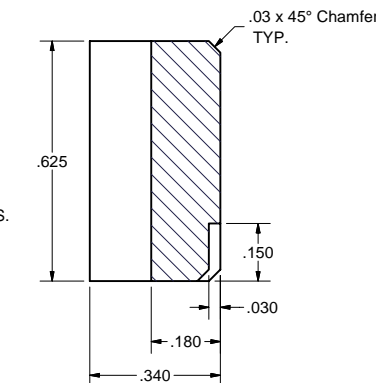
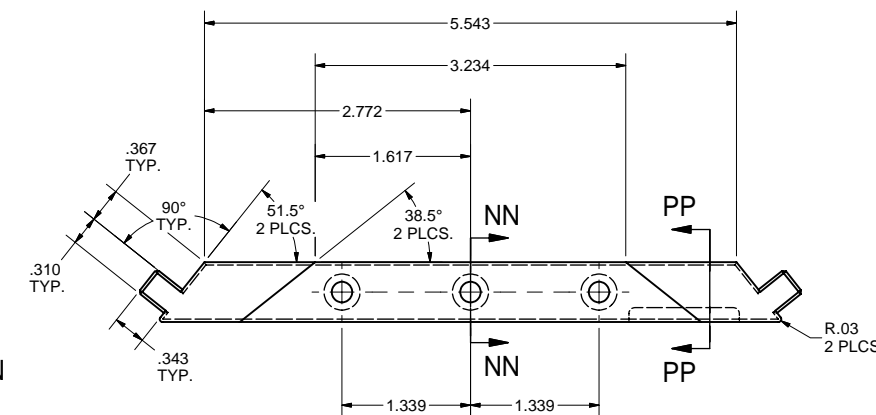
SECTION MM-MM



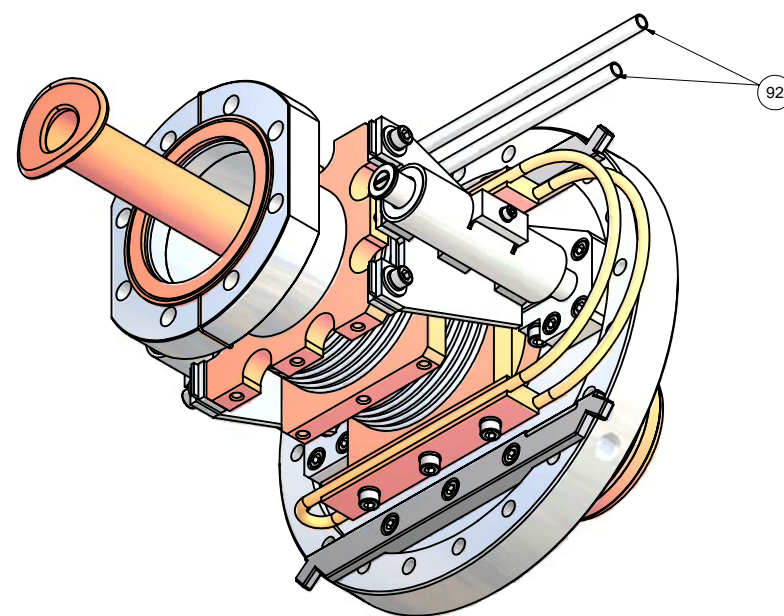
SECTION RR-RR
SCALE 2 : 1



SECTION NN-NN



SECTION PP-PP
SCALE 4 : 1



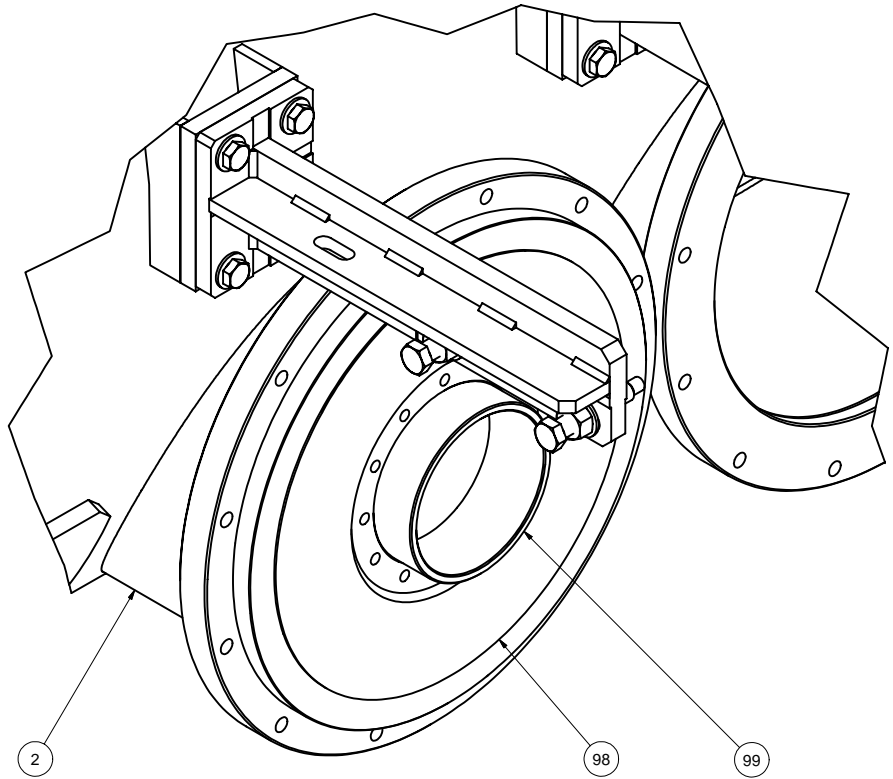
INPUT COUPLER (COLD) WITH HOLDER BARS, SUB-ASSEMBLY

FILE NAME: 7110-016
SHEET NO.: 14
DFT. SCALE: 1:1.5
MATERIAL: AS NOTED
QTY: 2 FOR ASSEMBLY
NOTES:

96		No. 10 Helical Spring Lock Washer	12			316 Stn. Stl.	
95	PURCHASED	No. 10-32 x 3/8 Hexagon Socket Head Cap Screw	6			316 Stn. Stl., Diconited	
94	PURCHASED	No. 10-32 x 3/4 Hexagon Socket Head Cap Screw	6			316 Stn. Stl.	
93	7110-016 (SH. 14)	HOLDER BAR	2				
92	7102-036 (SH. 2 - PT.3)	INPUT COUPLER COLD, 80 K FLANGES COOLING UNIT, LEFT	1				
91	100.101.000	INPUT COUPLER, COLD	1				
90	7110-016 (SH. 14)	INPUT COUPLER (COLD) WITH	X				

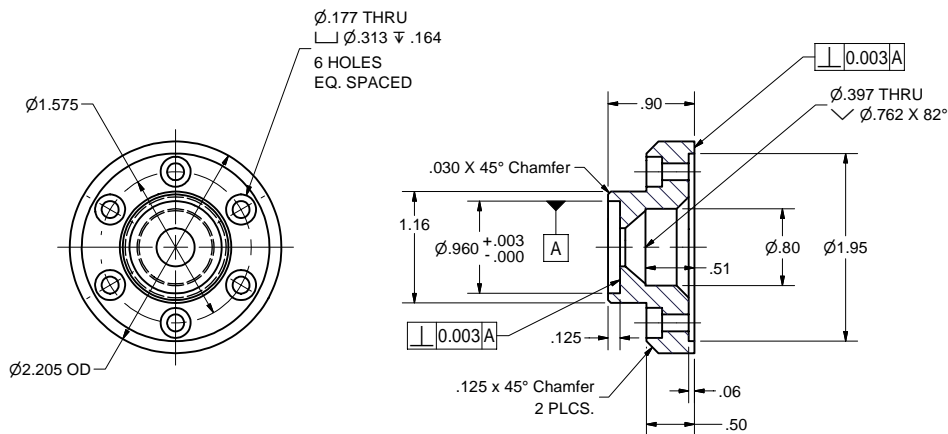
		ITEM	DWG. NO.	HOLDER BARS, SUB-ASM		G1	G2	G3	REMARKS	RE
		QUANTITY								
		PRINT DISTR.	PLOT DATE: 1/17/2008 CAD FILE NAME: 7110-016.idw							
7110-016 SH. NO. 14 OF 18		CR-1	UNLESS OTHERWISE SPECIFIED: DIMENSIONS ARE IN INCHES: TOLERANCES ON: .00 ± .02 .000 ± .005 FRACTIONS ± 1/32 ANGLES ± 0.5° ALL SURFACES		CORNELL UNIVERSITY Floyd R. Newman Laboratory Ithaca, NY 14853					
			ERL HORIZONTAL TEST CRYOSTAT INPUT COUPLER (WARM) ASSEMBLY FIXTURES INPUT COUPLER (COLD) SUB-ASM & HOLDER BAR DETAIL							
REV.		CHECKED BY: VGV APPROVED BY: VM	DRAWN BY VGV	DRAWN FOR SAB	DATE 3/15/2007	SCALE			7110-016 SH. NO. 14 OF 18	RE

REVISIONS				
SYM.	ZONE	DESCRIPTION	DATE	APP.



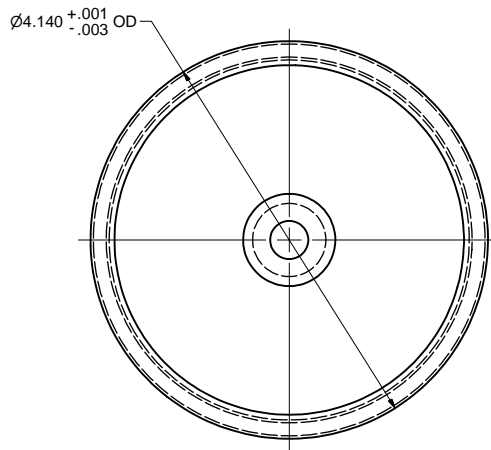
97 COUPLER OUTER FLANGE POSITION CHECK, ASSEMBLY

FILE NAME: 7110-016
SHEET NO.: 15
DFT. SCALE: 1:2
MATERIAL: AS NOTED
QTY: 1 FOR ASSEMBLY
NOTES: 1. MOUNT WARM COUPLER MOCKUP (ITEM 99) ON COLD COUPLER WINDOW.
2. ATTACH OUTER FLANGE (ITEM 98) AND MARK POSITION OF ITS EDGE ON COUPLER PORT FLANGE.
3. DISASSEMBLE.



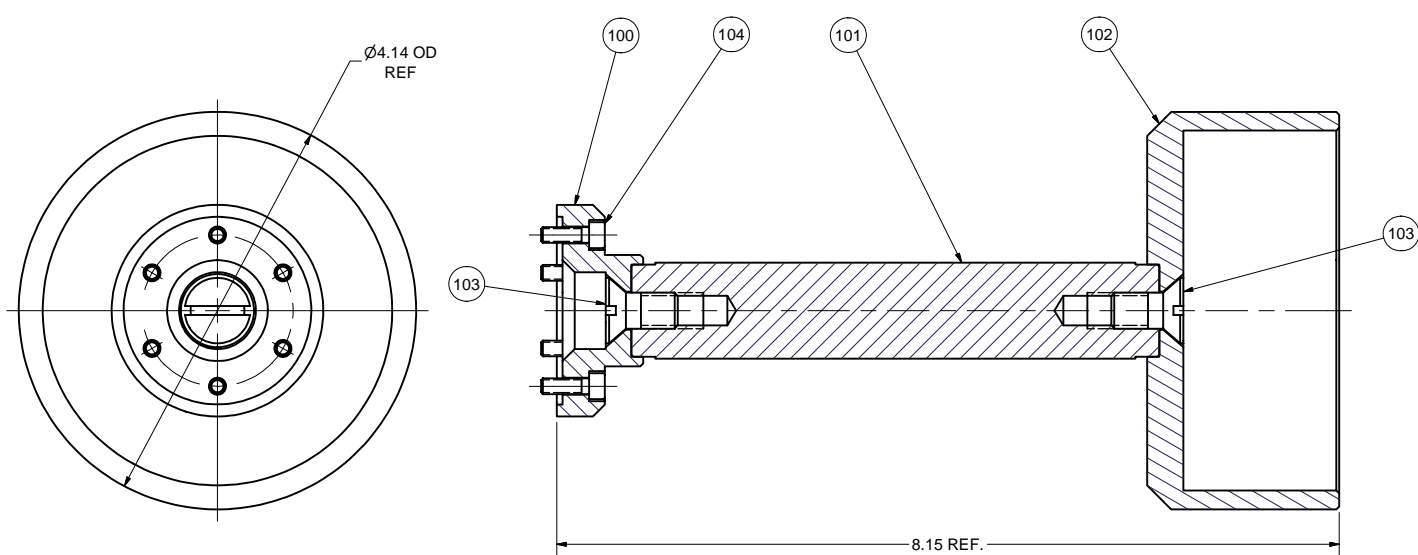
100 INNER FLANGE

FILE NAME: 7110-016
SHEET NO.: 15
DFT. SCALE: 1:1
MATERIAL: 6061 ALUMINUM
QTY: 1 FOR ASSEMBLY
NOTES:



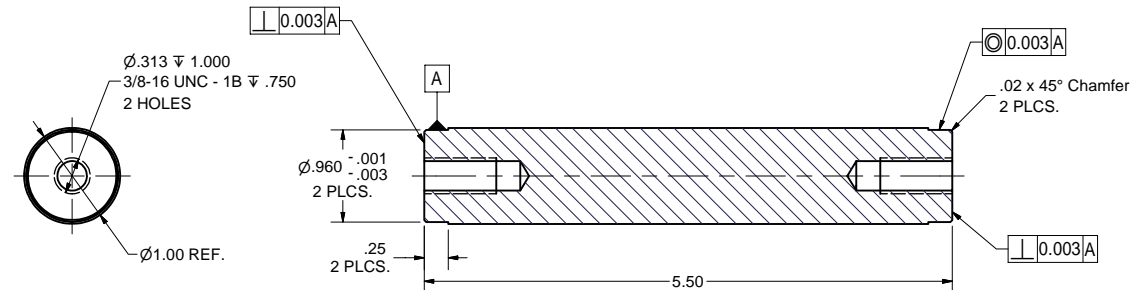
102 OUTER CUP

FILE NAME: 7110-016
SHEET NO.: 15
DFT. SCALE: 1:1
MATERIAL: 6061 ALUMINUM
QTY: 1 FOR ASSEMBLY
NOTES:



99 WARM COUPLER MOCKUP, SUB-ASSEMBLY

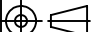



FILE NAME: 7110-016
SHEET NO.: 15
DFT. SCALE: 1:1
MATERIAL: AS NOTED
QTY: 1 FOR ASSEMBLY
NOTES:



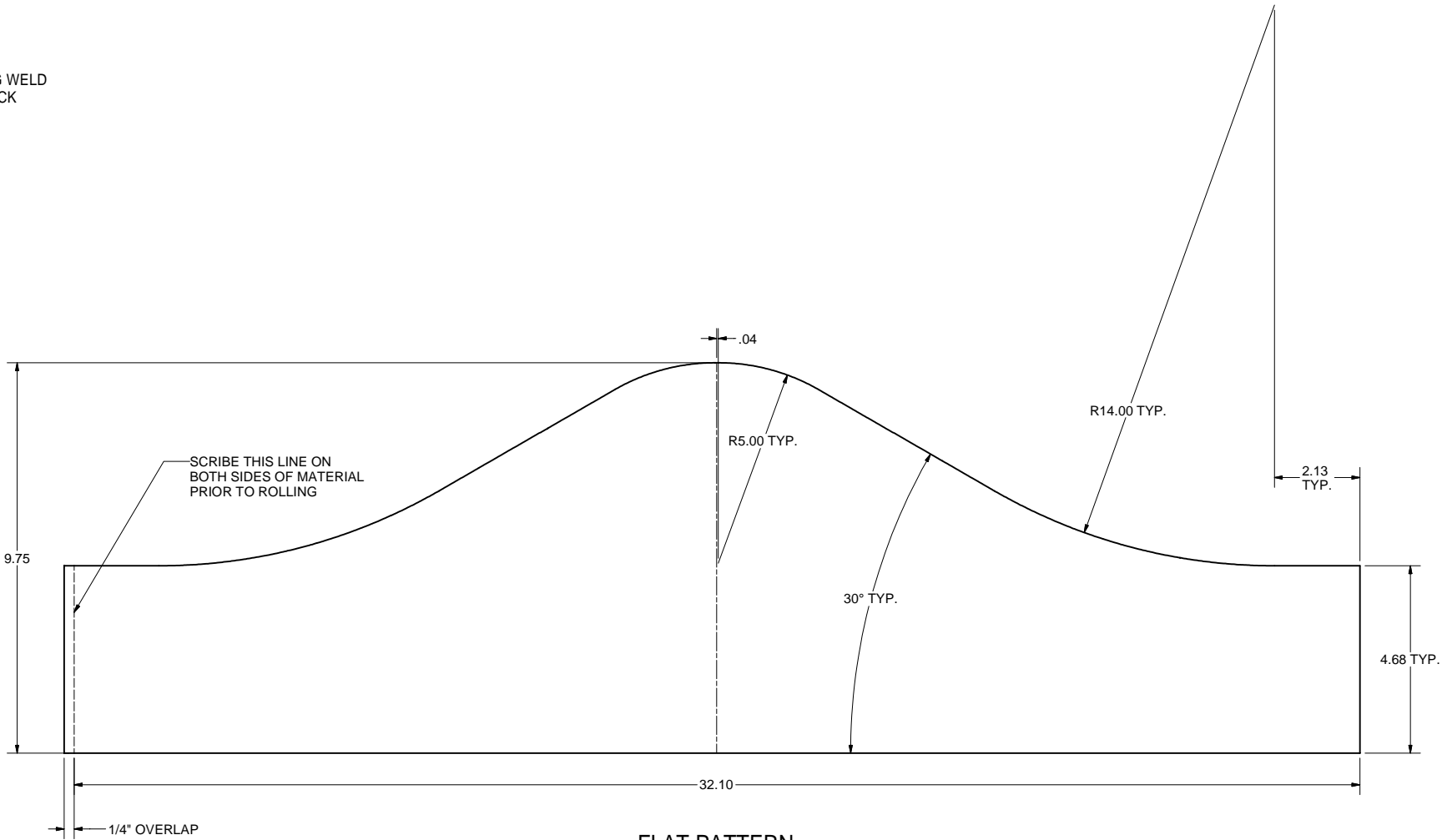
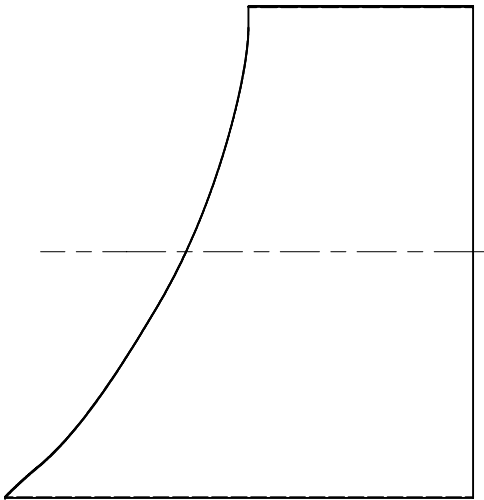
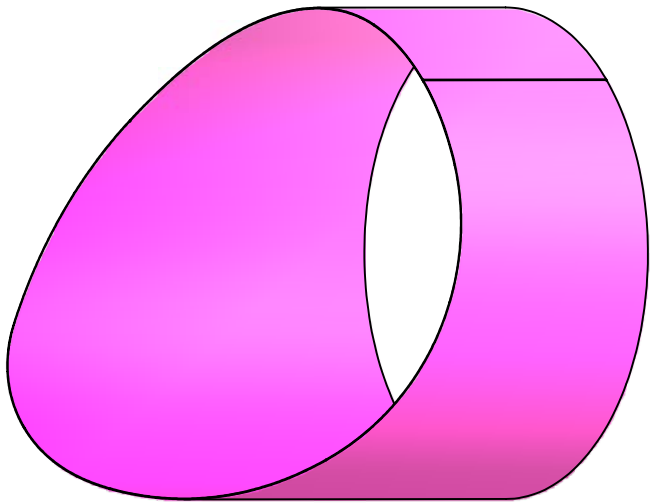
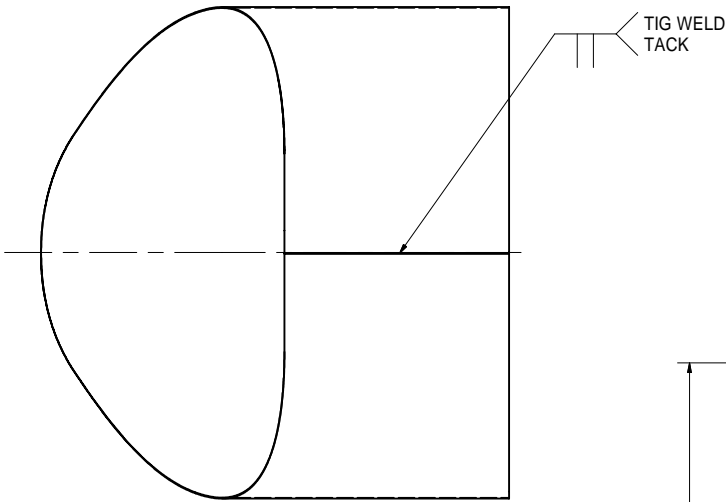
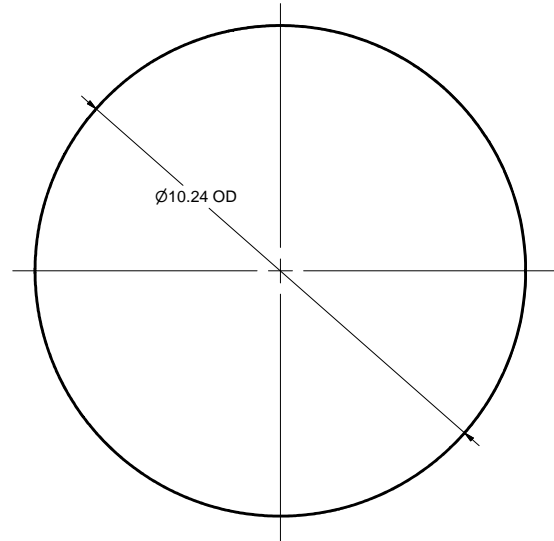
101 ROD

FILE NAME: 7110-016
SHEET NO.: 15
DFT. SCALE: 1:1
MATERIAL: 1" DIA. 6061 ALUMINUM ROD
QTY: 1 FOR ASSEMBLY
NOTES:

104	No. 8-32 x 1/2 Hexagon Socket Head Cap Screw	6	Stn. Stl.	
103	3/8-16 x 3/4 Slotted Flat Countersunk Head Cap Screw	2	Stn. Stl.	
102	7110-016 (SH.15) OUTER CUP	1		
101	7110-016 (SH.15) ROD	1		
100	7110-016 (SH.15) INNER FLANGE	1		
99	7110-016 (SH.15) WARM COUPLER MOCKUP, SUB-ASM	1	X	
98	7102-083 (SH. 2 - PT. 2)) COUPLER OUTER FLANGE	1		
2	7110-003 (SH. 1 - PT. 1) VAC VESSEL ASSEMBLY	1		
97	7110-016 (SH.15) COUPLER PORT FLANGE POSITION CHECK, ASM	X		

		ITEM	DWG. NO.	DESCRIPTION			G1	G2	G3	REMARKS	REV.
						QUANTITY					
	PRINT DISTR.	PLOT DATE: 1/17/2008 CAD FILE NAME: 7110-016.idw									
	CR-1	UNLESS OTHERWISE SPECIFIED: DIMENSIONS ARE IN INCHES; TOLERANCES ON: .0 ± .02 .00 ± .010 .000 ± .005 FRACTIONS ± 1/32 ANGLES ± 0.5° ALL SURFACES 		<div><div>CORNELL UNIVERSITY Floyd R. Newman Laboratory Ithaca, NY 14853</div></div> <div>ERL HORIZONTAL TEST CRYOSTAT INPUT COUPLER (WARM) ASSEMBLY FIXTURES SUB-ASM & PART DETAILS</div>							
SH. NO. 15 OF 18	7110-016	CHECKED BY: VGV		DRAWN BY: VGV	DRAWN FOR: SAB	DATE: 3/15/2007	SCALE: D	7110-016		REV.	
REV.		APPROVED BY: VM		SH. NO. 15 OF 18							

REVISIONS				
SYM.	ZONE	DESCRIPTION	DATE	APP.
A	D5	Added 1/4" extension to item #105 to facilitate overlap in welding after rolling.	6/26/07	TIO
B		Added sheets 17 & 18	1/17/08	TOC

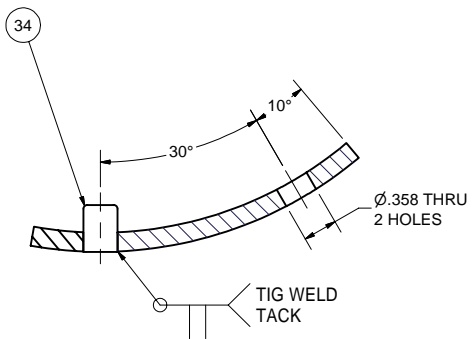


FLAT PATTERN

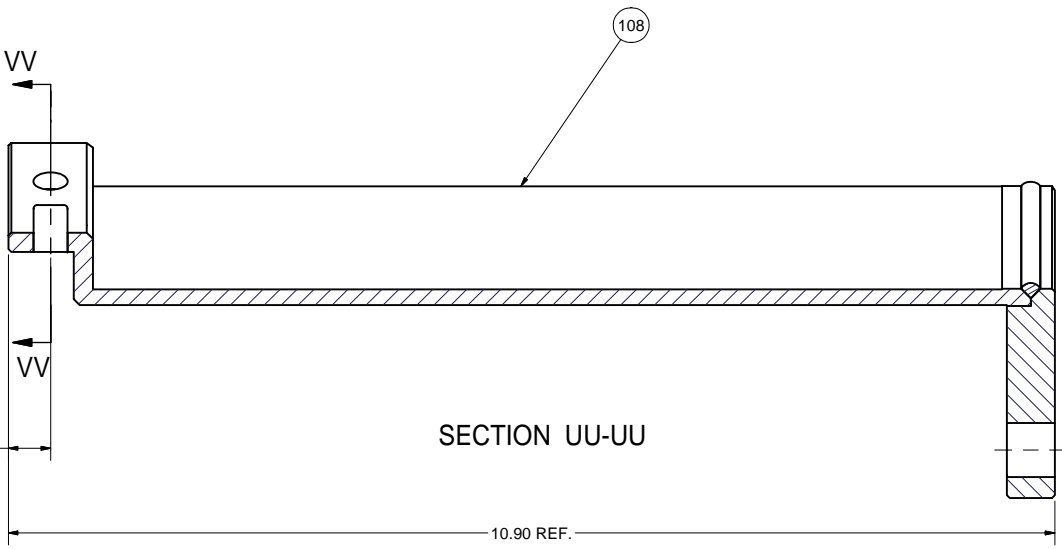
105 PROTECTION TUBE
FILE NAME: 7110-016
SHEET NO.: 16
DFT. SCALE: 1:2
MATERIAL: .015" STN. STL. SHEET
QTY: 2 FOR ASSEMBLY
NOTES:

		ITEM	DWG. NO.	DESCRIPTION	G1	G2	G3	REMARKS	REV.	
					QUANTITY					
D	PRINT DISTR.	PLOT DATE: 1/17/2008 CAD FILE NAME: 7110-016.idw								
7110-016 OF 18	CR-1	UNLESS OTHERWISE SPECIFIED: DIMENSIONS ARE IN INCHES: TOLERANCES ON: .0 ± .02 .00 ± .010 .000 ± .005 FRACTIONS ± 1/32 ANGLES ± 0.5° ALL SURFACES ✓			<div>CORNELL UNIVERSITY FLOYD R. NEWMAN LABORATORY ITHACA, NY 14853</div> <div>ERL HORIZONTAL TEST CRYOSTAT INPUT COUPLER (WARM) ASSEMBLY FIXTURES</div>					
		CHECKED BY: VGV			DRAWN BY: VGV	DRAWN FOR: SAB	DATE: 3/15/2007	SCALE: D	7110-016	REV. B
		APPROVED BY: VM			SH. NO. 16 OF 18					

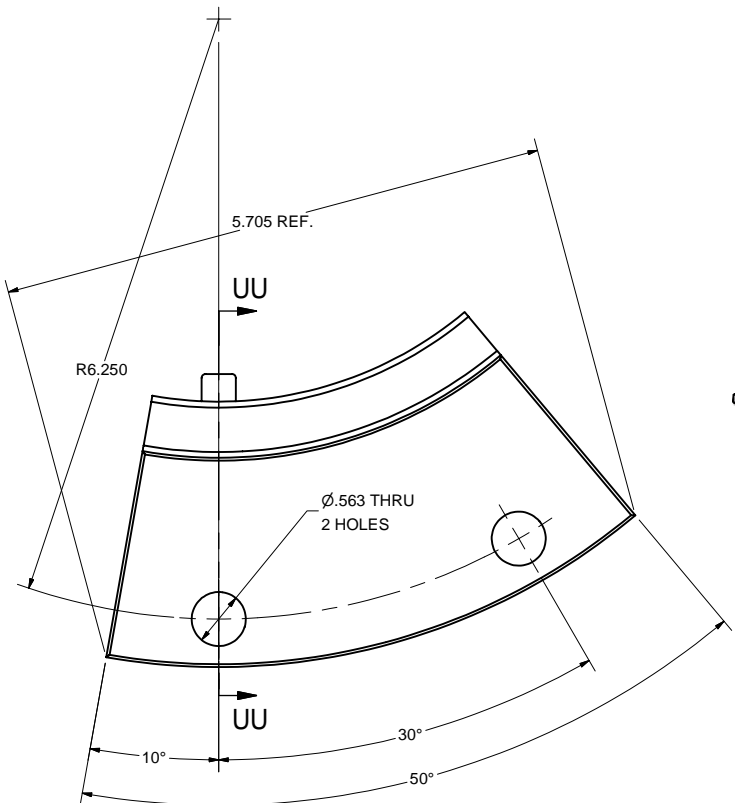
REVISIONS				
SYM.	ZONE	DESCRIPTION	DATE	APP.



SECTION VV-VV

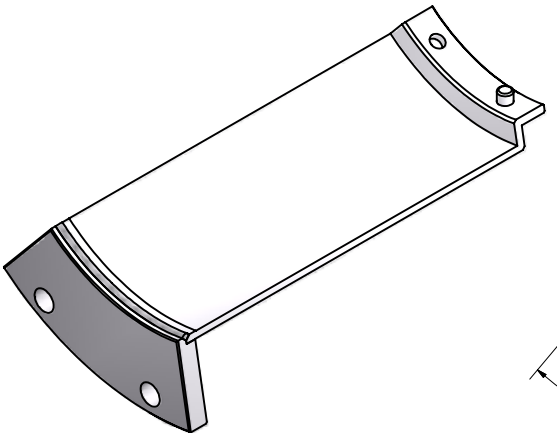


SECTION UU-UU

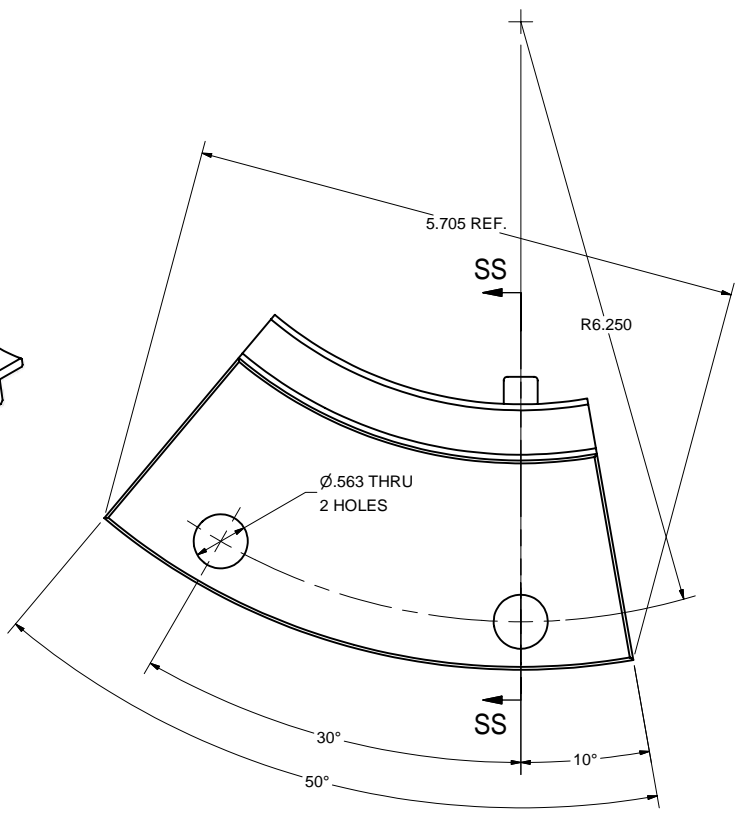


SCALE 1 : 2

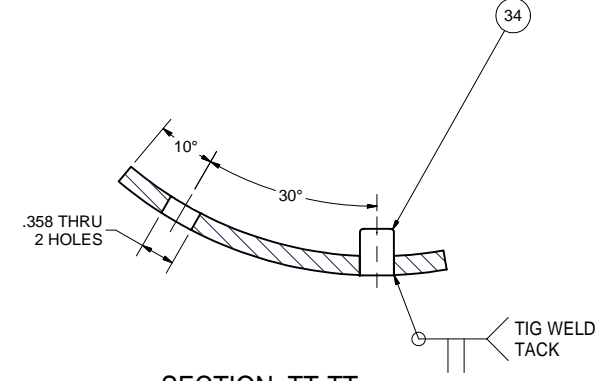
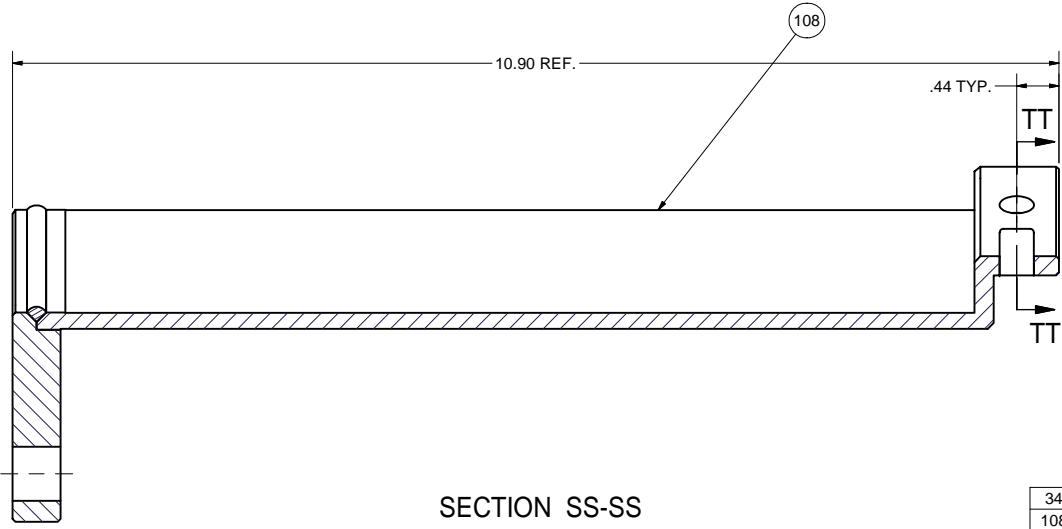
106 HOLDER 3, SUB-ASSEMBLY
FILE NAME: 7110-016
SHEET NO.: 17
DFT. SCALE: 1:1
MATERIAL: AS NOTED
QTY: 3 REQ'D
NOTES: CUT A 50° WEDGE FROM THE WELD HOLDER (NEW) SUB-ASSEMBLY (SHEET 18).



SCALE 1 : 2







SECTION SS-SS



SECTION TT-TT

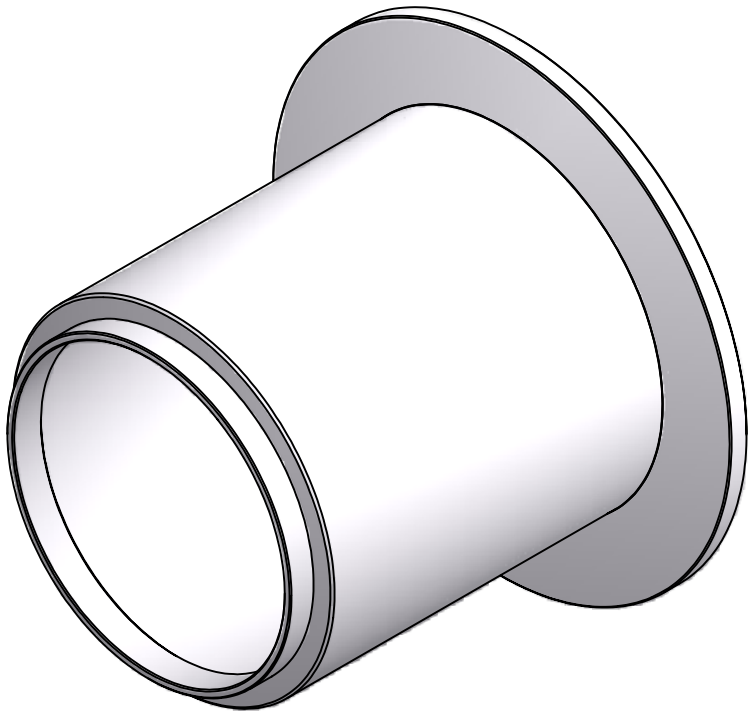
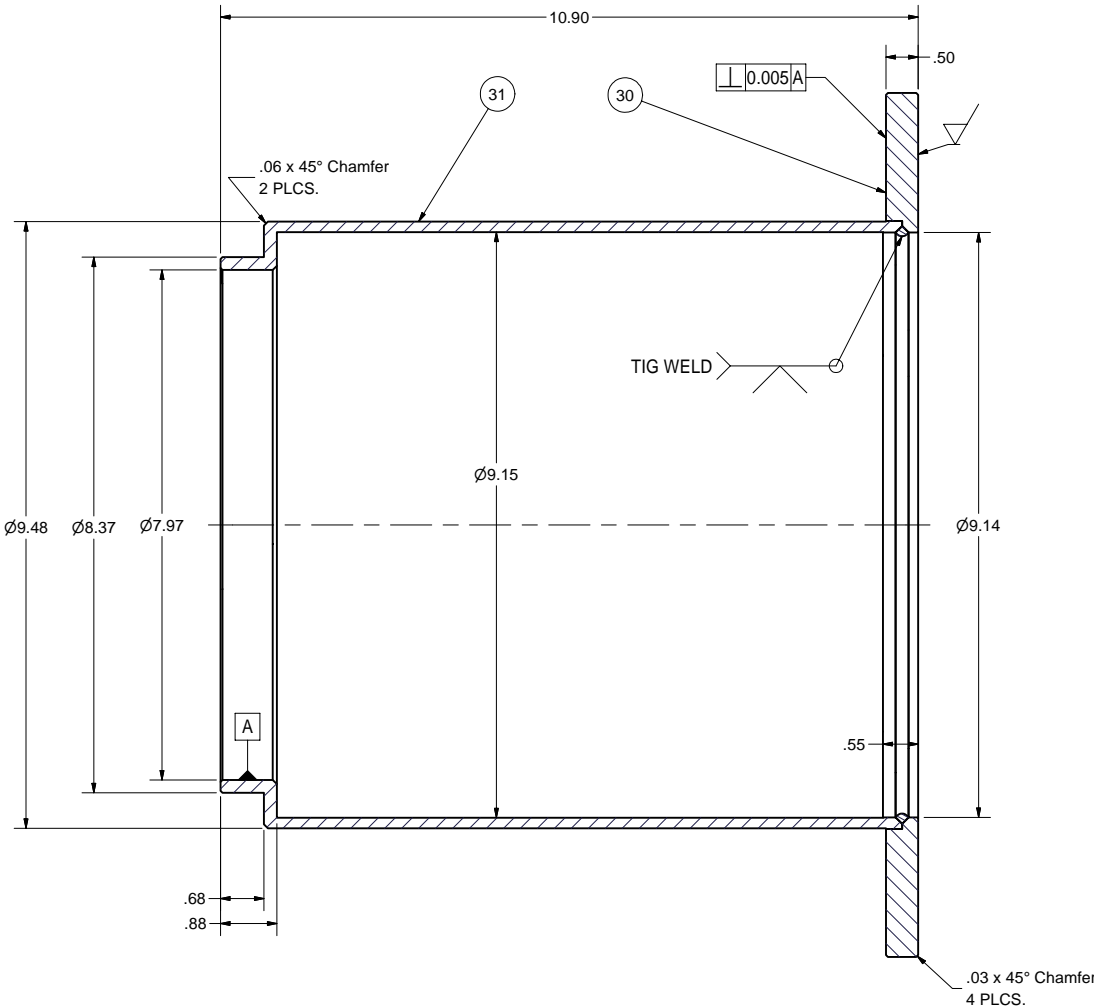
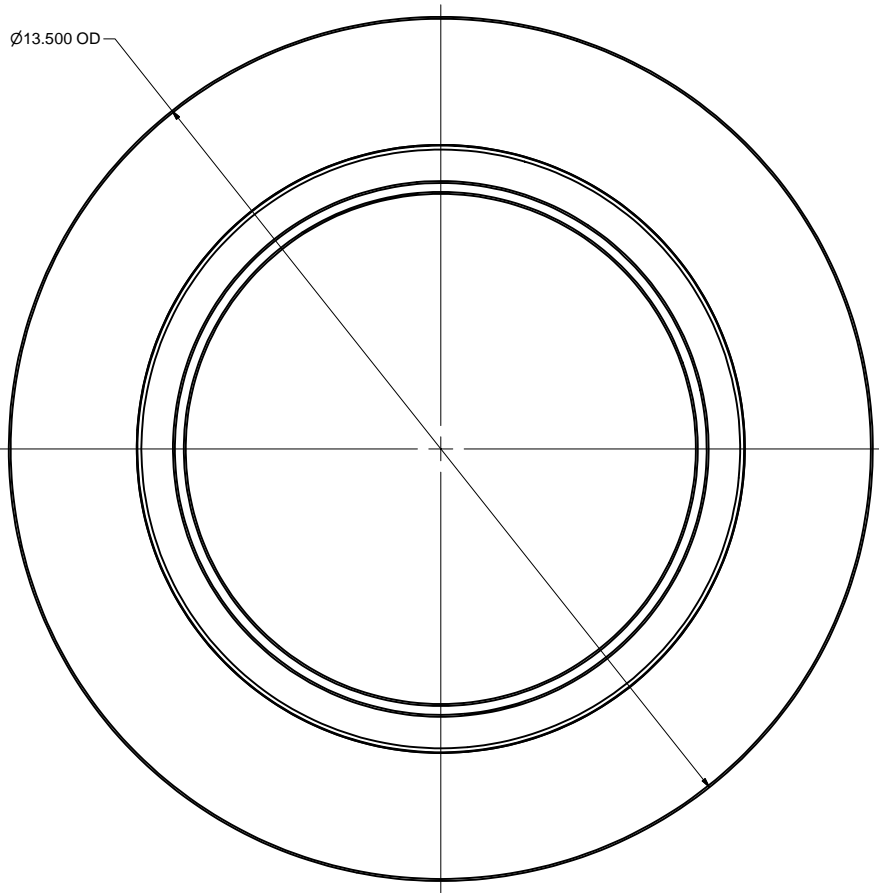
107 HOLDER 4, SUB-ASSEMBLY
FILE NAME: 7110-016
SHEET NO.: 17
DFT. SCALE: 1:1
MATERIAL: AS NOTED
QTY: 3 REQ'D
NOTES: CUT A 50° WEDGE FROM THE WELD HOLDER (NEW) SUB-ASSEMBLY (SHEET 18).

34	SHEET 4	PIN		1			
108	SHEET 18	HOLDER (NEW), WELDING SUB-ASM		1			
107	SHEET 17	HOLDER 4, SUB-ASSEMBLY		X			
34	SHEET 4	PIN		1			
108	SHEET 18	HOLDER (NEW), WELDING SUB-ASM		1			
106	SHEET 17	HOLDER 3, SUB-ASSEMBLY		X			

		ITEM	DWG. NO.	DESCRIPTION			G1	G2	G3	REMARKS	REV.
						QUANTITY					
	PRINT DISTR.	PLOT DATE: 1/17/2008 CAD FILE NAME: 7110-016.idw									
	CR-1	UNLESS OTHERWISE SPECIFIED: DIMENSIONS ARE IN INCHES; TOLERANCES ON: .0 ± .02 .00 ± .010 .000 ± .005 FRACTIONS ± 1/32 ANGLES ± 0.5° ALL SURFACES 		 CORNELL UNIVERSITY Floyd R. Newman Laboratory Ithaca, NY 14853							
7110-016 SH. NO. 17 OF 18		ERL HORIZONTAL TEST CRYOSTAT INPUT CRYO (WARM) ASSEMBLY FIXTURES									
REV.	CHECKED BY: VGV	DRAWN BY: VGV		DRAWN FOR: SAB		DATE: 3/15/2007	SCALE: D	7110-016		REV.	
	APPROVED BY: VM	SH. NO. 17 OF 18									

CORNELL UNIVERSITY
FLOYD R. NEWMAN LABORATORY
ITHACA, NY 14853
ERL HORIZONTAL TEST CRYOSTAT
INPUT COUPLER (WARM) ASSEMBLY FIXTURES

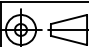

REVISIONS				
SYM.	ZONE	DESCRIPTION	DATE	APP.



SCALE 1 : 2

- 108 HOLDER (NEW), WELDING ASSEMBLY
- FILE NAME: 7110-016
SHEET NO.: 18
DFT. SCALE: 1:1.5
MATERIAL: AS NOTED
QTY: 1 REQ'D
NOTES: 1. MACHINE AFTER WELDING
2. AFTER MACHINING, CUT IN 50° WEDGES FOR MAKING HOLDERS ITEMS 106 AND 107 (SEE SHEET17)

31	inner_part	INNER PART	1					
30	outer_flange	OUTER FLANGE	1					
108	SHEET 18	HOLDER (NEW), WELDMENT ASSEMBLY	X					

		ITEM		DWG. NO.		DESCRIPTION		G1	G2	G3	REMARKS		REV.
								QUANTITY					
D	PRINT DISTR.	PLOT DATE: 1/17/2008 CAD FILE NAME: 7110-016.idw											
7110-016 SH. NO. 18 OF 18	CR-1	UNLESS OTHERWISE SPECIFIED:		<div><div>LEPP</div><div>CORNELL UNIVERSITY Floyd R. Newman Laboratory Ithaca, NY 14853</div><div>LABORATORY FOR ELEMENTARY-PARTICLE PHYSICS</div></div>									
		DIMENSIONS ARE IN INCHES: TOLERANCES ON: .0 ± .02 .00 ± .010 .000 ± .005 FRACTIONS ± 1/32 ANGLES ± 0.5° ALL SURFACES ✓											
				ERL HORIZONTAL TEST CRYOSTAT INPUT COUPLER (WARM) ASSEMBLY FIXTURES									
REV.	CHECKED BY: VGV	DRAWN BY VGV		DRAWN FOR SAB		DATE 3/15/2007		SCALE 1:1.5		D	7110-016		REV.
	APPROVED BY: VM										SH. NO. 18 OF 18		